



Tony Sheppard

Architect

B.Arch., F.R.I.A.I., R.I.B.A.

1990 - 2022 Technical Manager Planning & Building Unit,
Department of Education Ireland

2010 - 2019 Chair of the Board of Participants of the
OECD Directorate for Education -
Centre for Effective Learning Environments (CELE)
later known as the
Group of National Experts on Effective Learning
Environments (GNEELE)

**Harcourt Terrace Educate Together
Elementary School,
Dublin, Ireland**

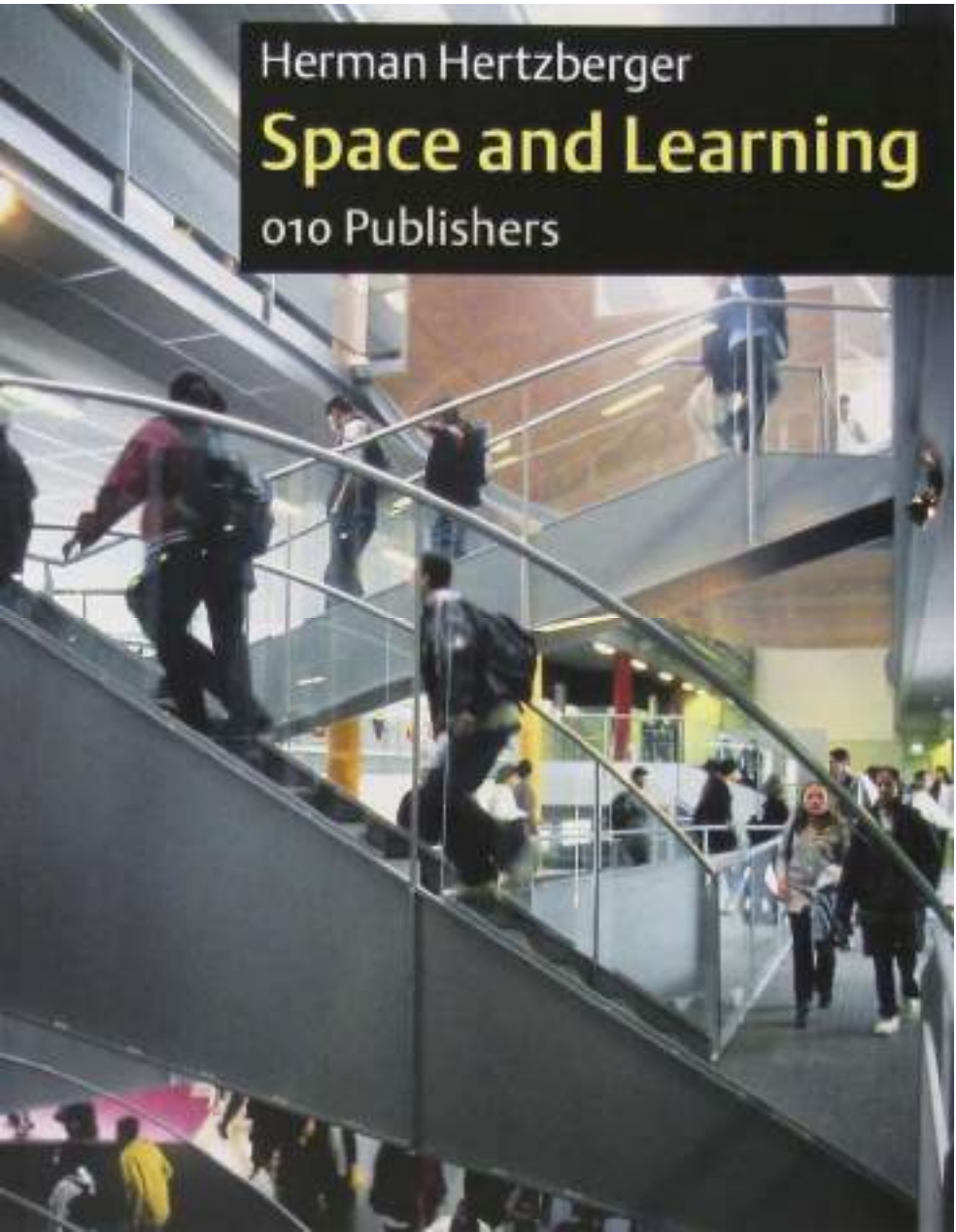
A new urban primary school with
innovative learning environments

from

design competition concept 2015

to

completed school in use 2024



Herman Hertzberger

Space and Learning

010 Publishers

Prof. Herman Hertzberger

OECD – Centre for Effective Learning Environments (CELE)
conference:

Space and Learning, in Ljubljana, Slovenia 2009:

Extract from presentation:

“Architects should not get involved in debates about education; instead, they should create spatial conditions that will benefit learning in a general sense. The building should provide a general framework for education and learning, while being flexible enough to respond to changing demands and even (in a spatial sense) hold out a suggestion of pursuing avenues other than those laid down in the brief”.

Comparison between effective teaching areas in
Standard Elementary Classroom

and

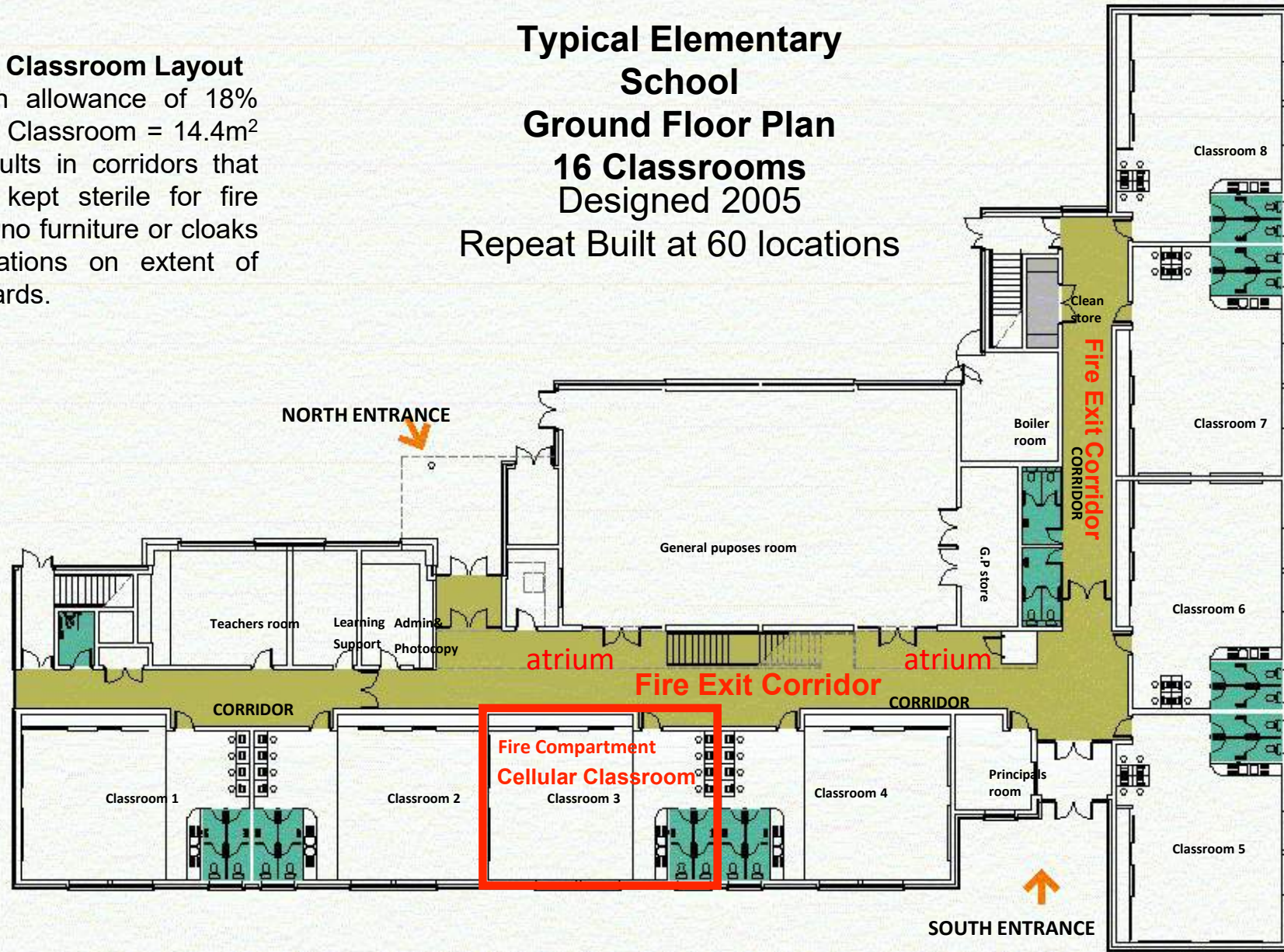
Innovative Class Base with Shared Activities Areas

International Review undertaken with
Department of Education Ireland Educationalists in developing
Pedagogical Brief for Design Competition

Standard Classroom Layout

Circulation allowance of 18% per 80m² Classroom = 14.4m²
This results in corridors that must be kept sterile for fire escape – no furniture or cloaks and limitations on extent of notice boards.

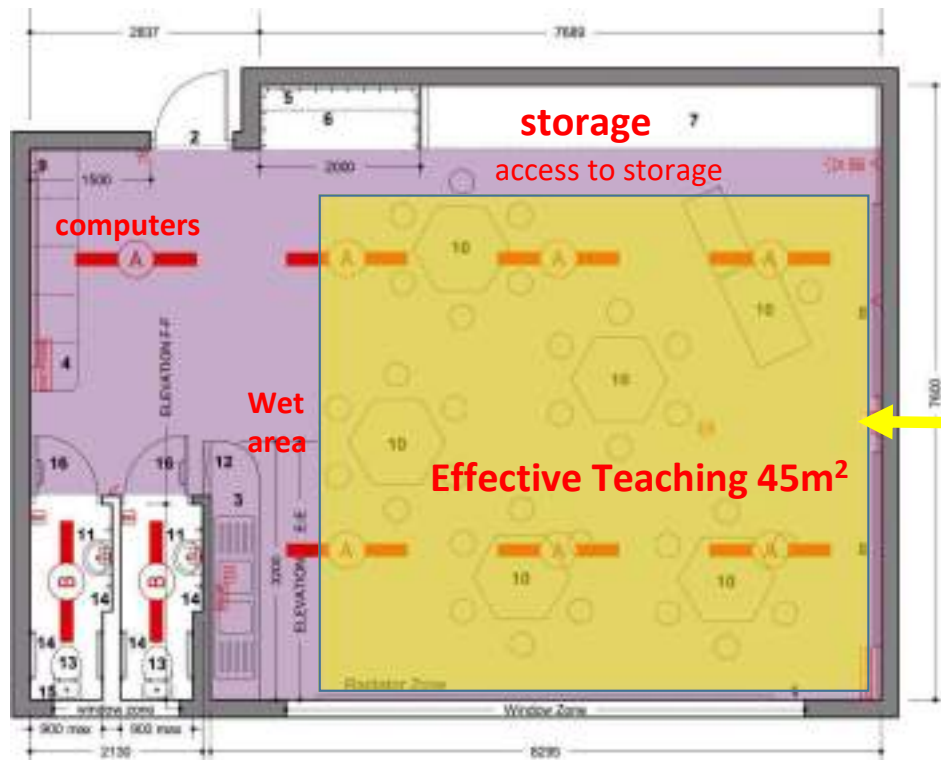
Typical Elementary School Ground Floor Plan 16 Classrooms Designed 2005 Repeat Built at 60 locations





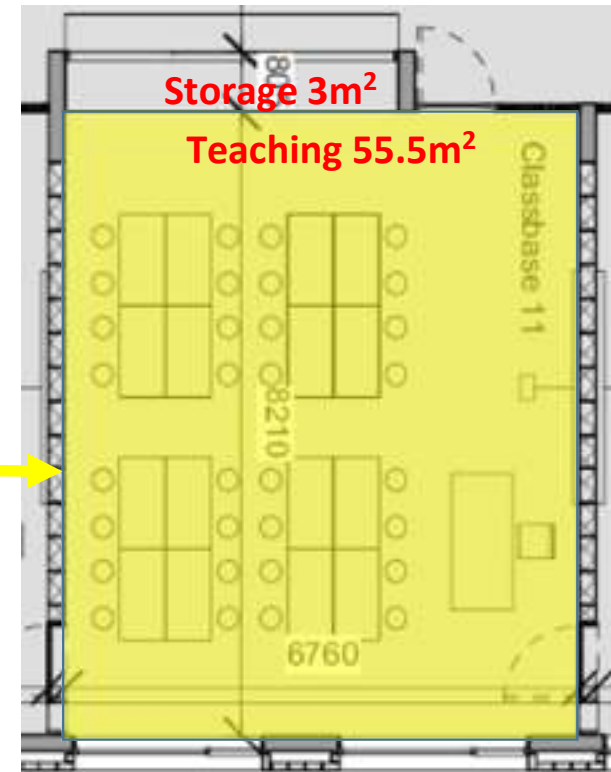
Classroom layout

Comparison between Standard Primary and Innovative Class Base



Standard Primary Classroom – 80m²

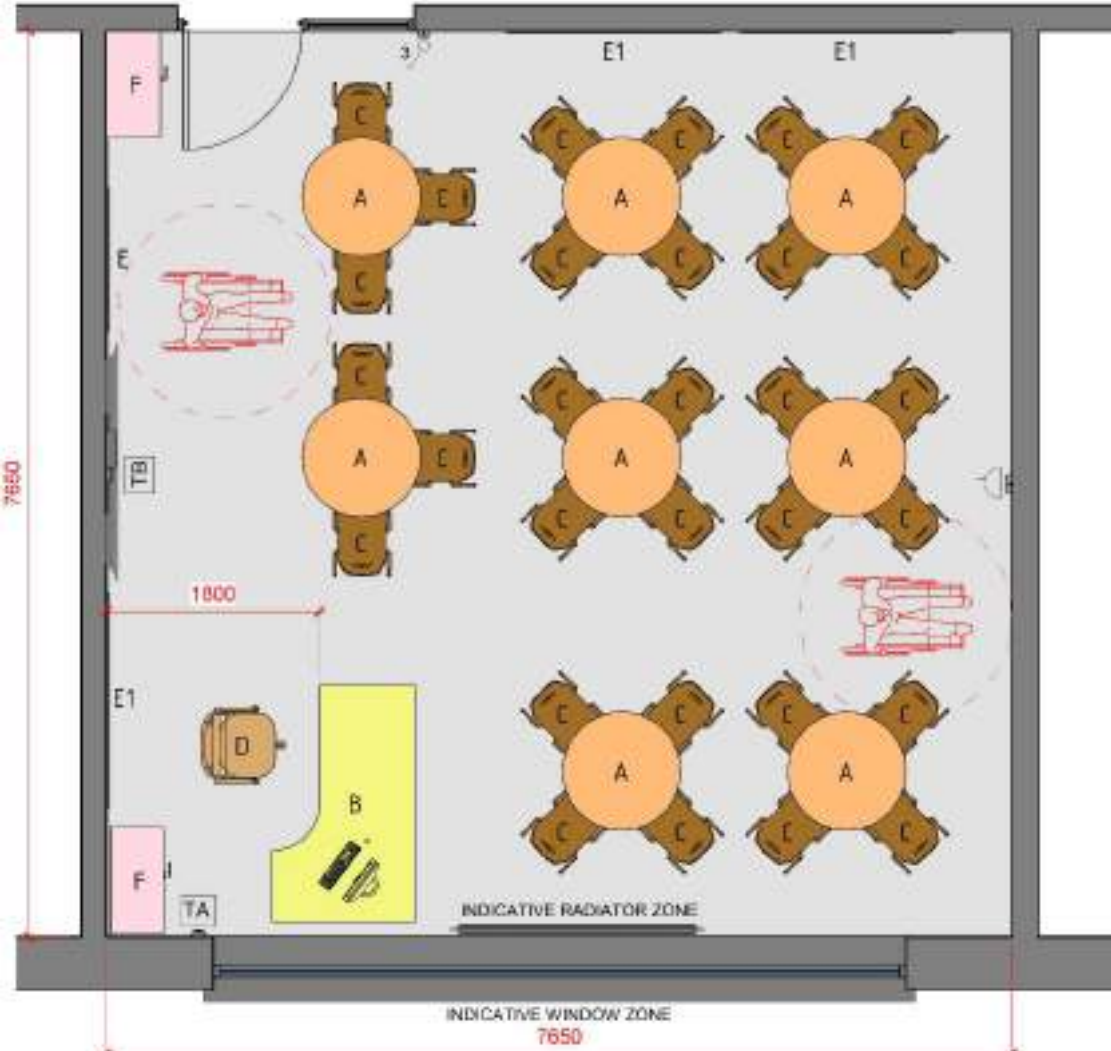
Teaching Area exclude ensuite toilets, wet area, computer area, cloaks, stores & access circulation **45 m²**



Innovative Class Base 58m² minimum

Teaching area **55.5m²**

Standard Post-Primary / Secondary Classroom for 30 pupils



58.5 m²

TYPICAL 24 CLASSROOM SCHOOL WITH 2 CLASS SNU

SCHEDULE OF OVERALL ACCOMMODATION

Description of Space	No. of spaces	Area (m ²)	Total Area
Classroom(s) including WCs & storage	24	80.0 m ²	1920.0 m ²

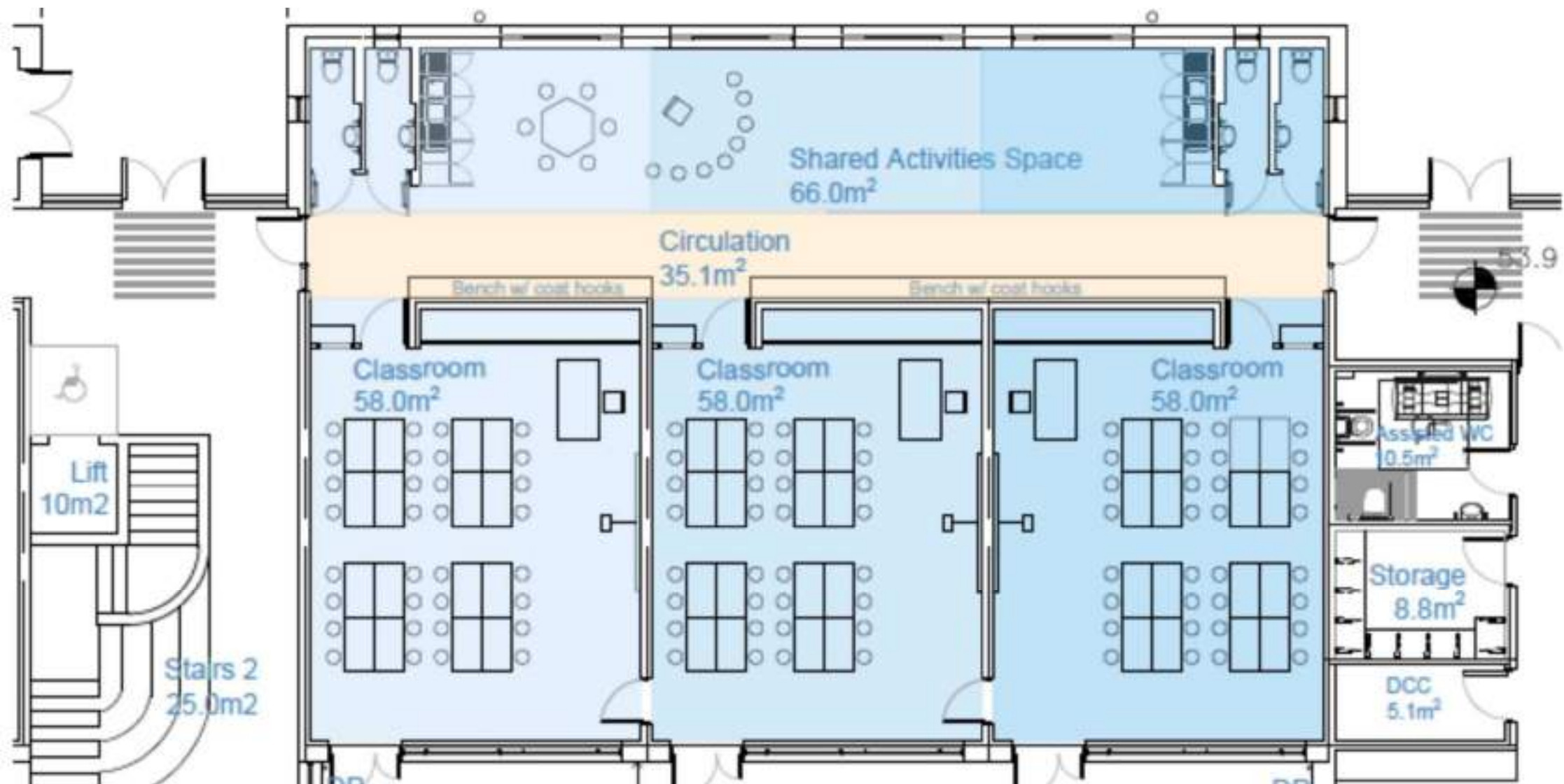
Classrooms: Innovative Brief 30 pupils per Class

No. of spaces	Area m ²	Description of Space	Total Area m ²
24	80	Classroom Base including Storage (Minimum 58 m ²)	1,920
		Pupil Toilets (5m ² allowance per class, may be grouped adjacent to Classroom Base)	
		Pupils Coat storage (adjacent to groups of classrooms)	
		Less formal learning space (literacy, ICT, wet, & storage) adjacent to Classroom Base. (See potential of remaining area in overall 80 m ² per classroom allowance)	



Innovative Learning Spaces, Finland

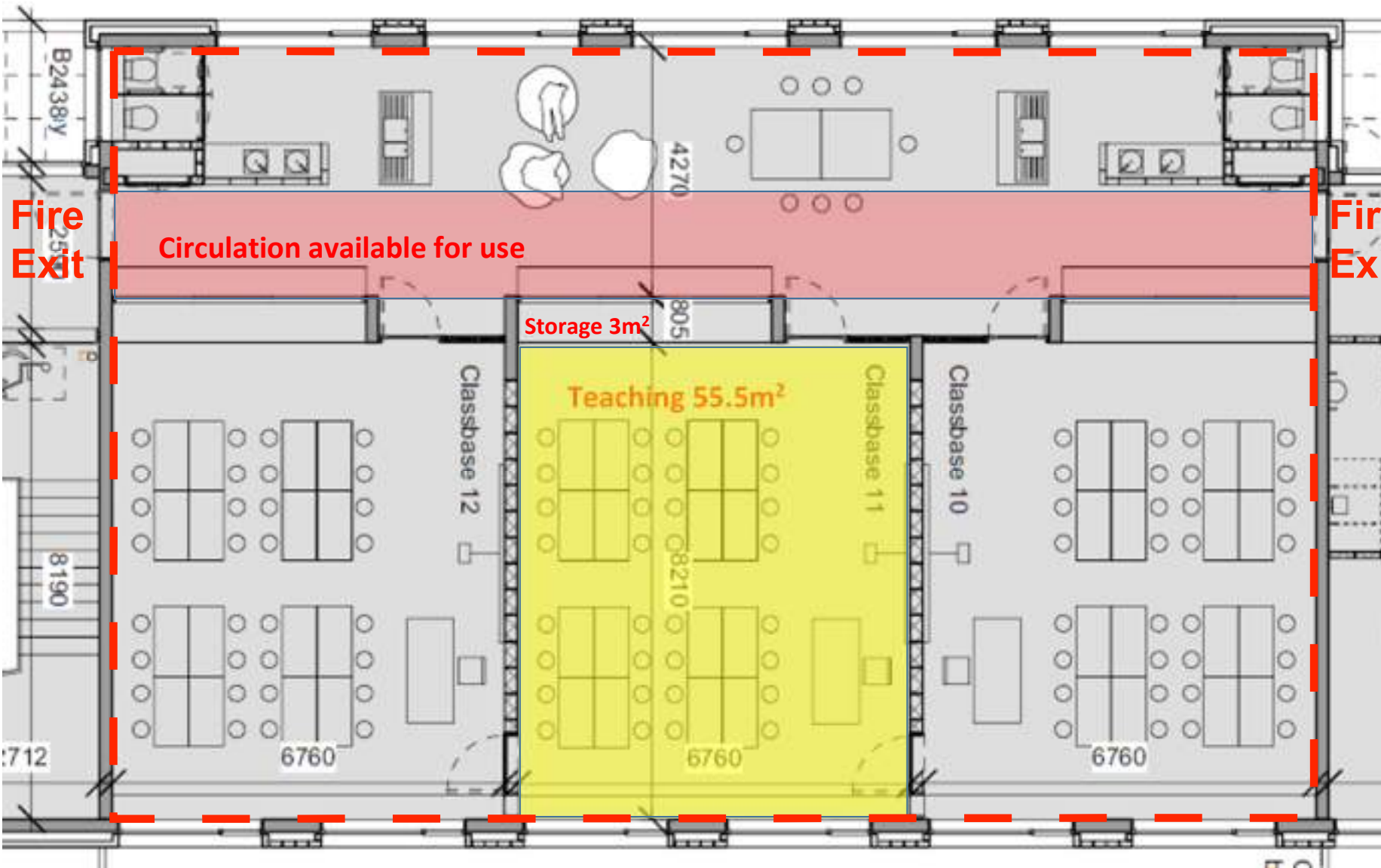
HÖSMÄRINPUISTON KOULU JA PÄIVÄKOTI



Typical Classrooms - 80m² x3 = 240m²
 Innovative Classroom layout - (58m² + 22m²) x3 = 240m²

Harcourt Terrace Layout

21645



Fire Exit

Circulation available for use

Storage 3m²

Teaching 55.5m²

Fire Exit

No restrictions on use of circulation as single fire compartment with exits at both ends.

Innovative Class Base

In this example circulation allowance of 14.4m² per class is available for educational use.



Architectural Design Competition

**Urban Primary School,
Harcourt Terrace, Dublin 2
Republic of Ireland
for the**

Department of Education & Skills

See complete text in handout circulated

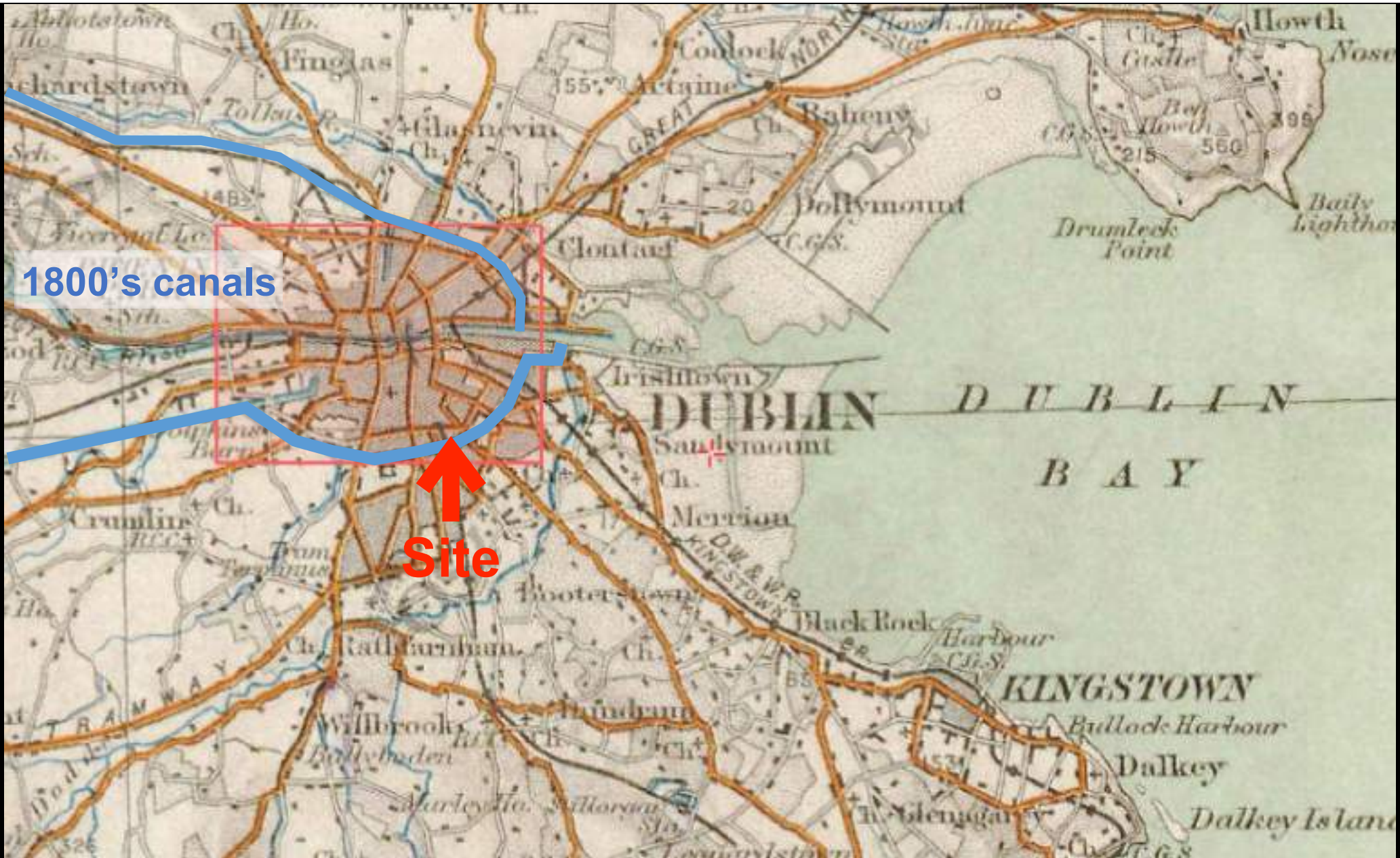
Pedagogical Brief

**Schedule of Accommodation for a 24 classroom Primary School
with Special Educational Needs Unit**

No. of spaces	Area m ²	Description of Space	Total Area m ²
24	80	Classroom Base including Storage (Minimum 58 m ²) Pupil Toilets (5m ² allowance per class, may be grouped adjacent to Classroom Base) Pupils Coat storage (may be grouped adjacent to classrooms) Less formal learning space (literacy, ICT, wet, & storage) adjacent Classroom Base. (See potential of remaining area in overall 80 m ² per classroom allowance)	1,920
2	195	General Purpose Room - interlinked	390
2	8	General Purpose Room Servery – combined	16
2	20	P.E. Equipment Store	40
2	15	Pupil Toilets (4 no. w.c.s) associated with each General Purpose Room	30
1	66	Library & Media Area	66
1	33	Resource Area	33
2	20	Multi-Purpose Room	40
4	15	Special Education Tuition Rooms	60
1	25	Administration/General Office	25
1	75	Teachers & Staff Room	75
1	15	Principal's Office	15
1	15	Deputy Principal's Office	15
4	10.5	Toilet/Shower for Assisted Users	42
2	4.5	Universal Accessible Toilet for Independent Users	9
4	3.5	Adult Toilet (Staff & Public users)	14
1	50	General Storage (including secure, cleaner's & external)	50
1	6	Electrical Switchboard	6
1	6	Data Communications Centre	6
		Sub-Total School	2,851
		Plus Two Classroom Special Needs Unit (SNU) (as detailed next page)	379
		Total Net Area	3,230
		Internal Walls/Partitions @ 7%	226
		Internal Circulation @ 21%	678
1	25	Boiler House	25
		GROSS FLOOR AREA (excluding stairs & lift)	4,159
		Plus 25m ² per stairs per floor	
		Plus 10m ² for a Lift per floor	
		GROSS FLOOR AREA (including stairs & lift)	

24 classroom
x 30 pupils each = 720

2 Special Classrooms
x 6 pupils each = 12



1800's canals

Site





Grand Canal 1803

Site

Disused Police Station

Victorian redbrick 1880's

Regency 1830

Portland Terrace

Woolwich

Woolwich



Regency 1830

Victorian redbrick 1880's

Site

Grand Canal 1803

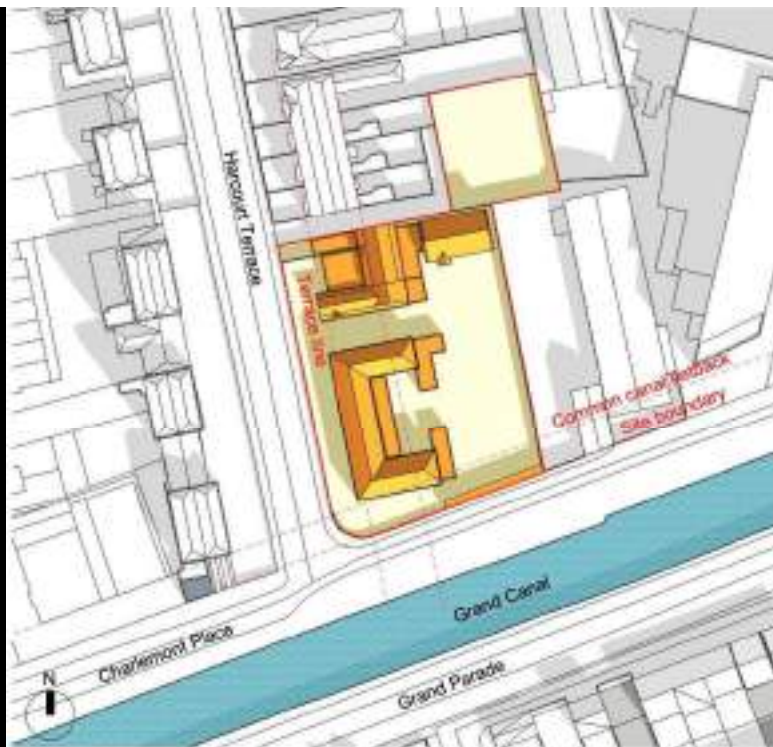


Regency 1830

Victorian redbrick 1880's

Grand Canal 1803

Site



Site Plan 1:1000

Existing
Site Area 0.35ha

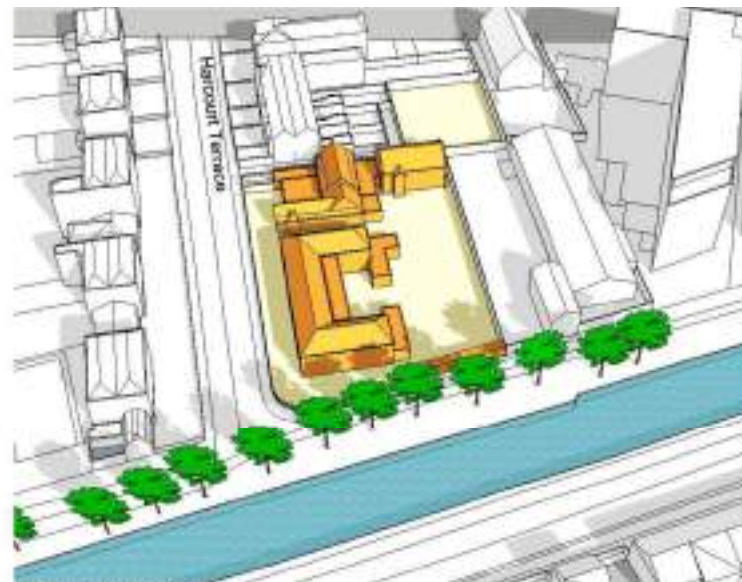
Building Areas
0 507+481msq
+1 423+206msq
Total 1617msq

Plot Ratio: 0.466

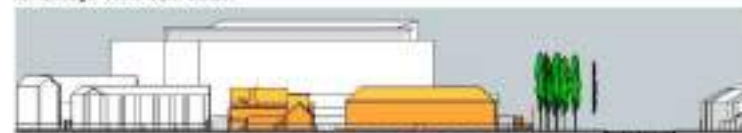
Site coverage: 31%

Features
- 2-storey, domestic scale in keeping with streetscape

- Materiality: brick, concrete, stone
- Set-back in common with terrace
- Set-back from canal boundary, in line with other canal buildings



Bird's Eye View from South



Harcourt Terrace Elevation 1:1000



Canal View from West



Approach along Harcourt Terrace



Bird's Eye from SW

Harcourt Terrace Massing Studies
Existing Views

Page No 1
Date 08/06/2014
Drawn By IK



Site Plan 1:1000

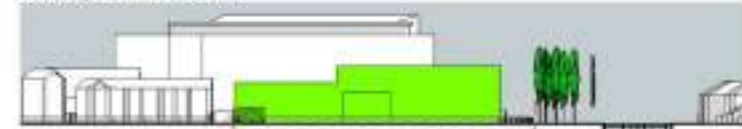
Option 3
 Site Area 0.35 ha
 Building Areas
 -0 253mq
 0 1097mq
 +1 959mq
 +2 723mq
 Total 3032mq

+ underground parking
 Plot Ratio: 0.66
 Site coverage: 59%
 Elevation achieved using standard D&S floor to ceiling heights (3000mm) with 1500mm safety barriers for rooftop play spaces.

- Features**
- 16 Classroom + 2 Classroom SNU
 - 1- to 3-storey, scale in keeping with streetscape
 - Set-back and depth of west block in common with terrace
 - Set-back from canal boundary, in line with other canal buildings



Bird's Eye View from South



Harcourt Terrace Elevation 1:1000



North-South Section 1:1000



Canal View from West



Approach along Harcourt Terrace



Bird's Eye from SW

2015
Open Competition
70 Entries

Jury selects
5 Shortlisted to advance to
Stage 2

Shortlisted



Aerial view from south

1. Sean Harrington Architects, Dublin



View from canal

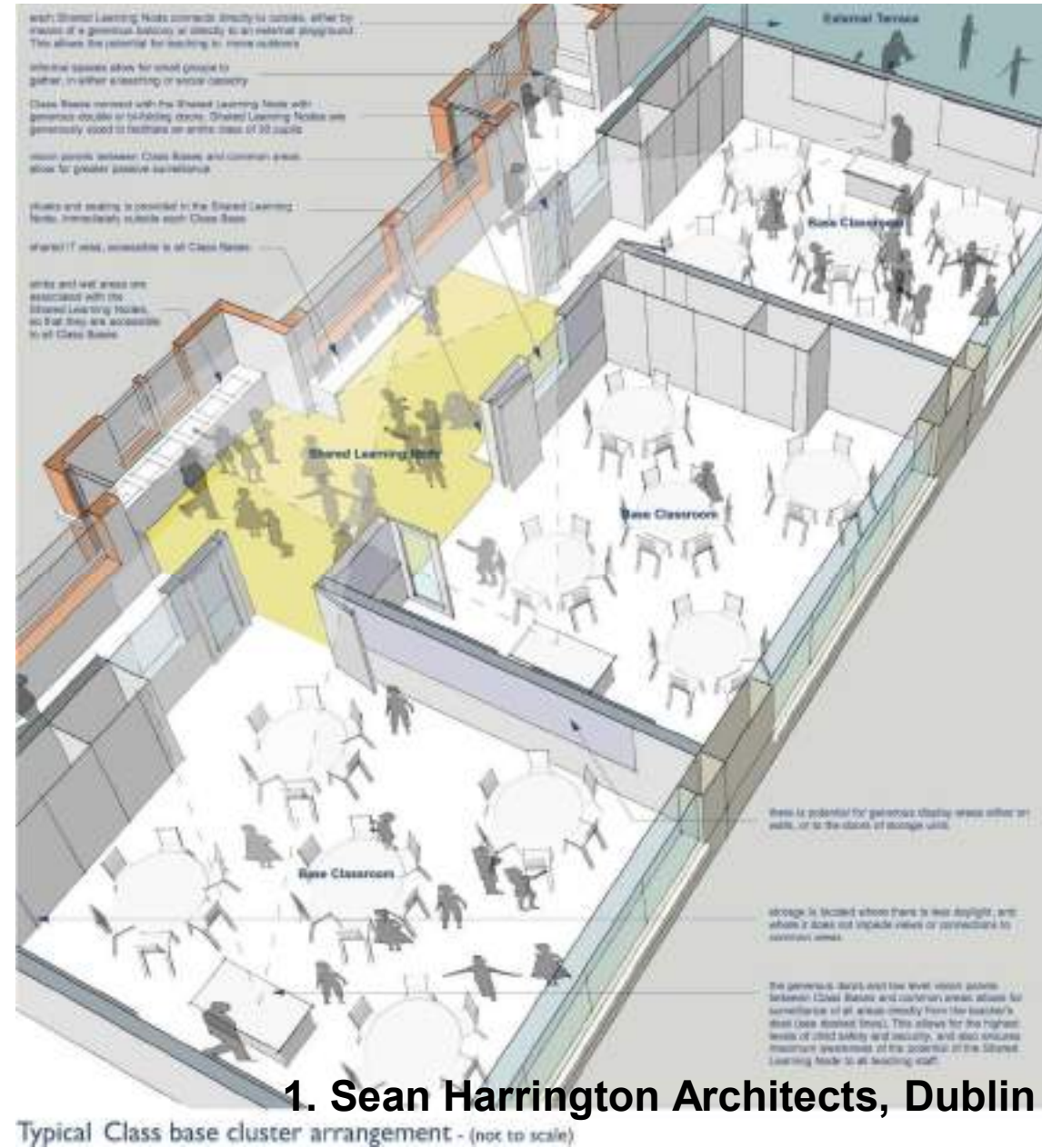
1. Sean Harrington Architects, Dublin



Section B/B through GP Room - Scale 1/50

Sean Harrington Architects, Dublin

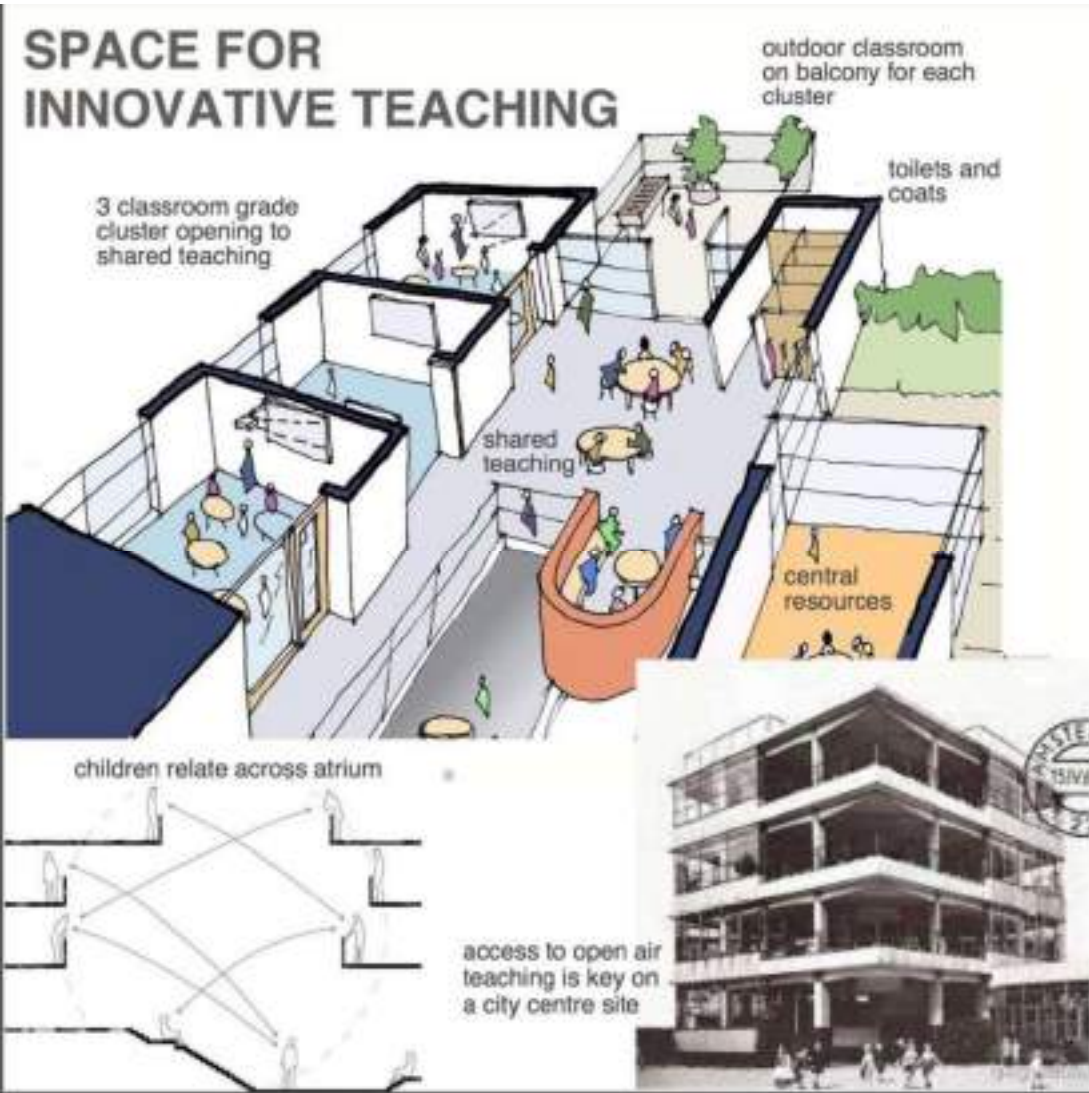
- First Floor
- 12 base classrooms..... 12 x 431m²
 - 4 Shared Learning Nodes..... 4 x 431m²
 - SET rooms..... 15m²
 - Toilet/Showers for assisted users..... 10.9m²
 - Staff toilet..... 3.5m²
 - External play-space..... 281m²





2. ARPL Architects Scotland

- also winners of Kingswood Post-Primary School Competition 2013 - built



2. ARPL Architects Scotland

3. Carmody Groarke, England

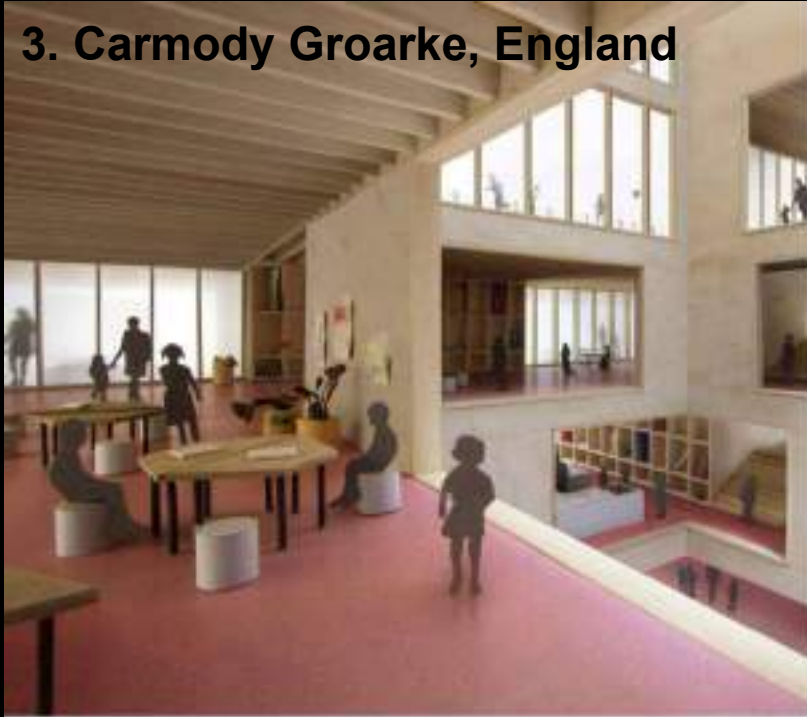


PHOTO COURTESY OF CARMODY GROARKE ARCHITECTS FOR THE GARDEN CENTER



PHOTO COURTESY OF CARMODY GROARKE ARCHITECTS FOR THE GARDEN CENTER



First Floor Plan - 1:200



Second Floor Plan - 1:200



3. Carmody Groarke, England



3. Carmody Groarke, England



4. GKMP Architects, Dublin

Winner



Please use the same unique code as used in Stage 1	Letter (a-z)	Letter (a-z)	Figure (0-9)	Figure (0-9)	Figure (0-9)
	P	F	1	1	1

Entry Form – Stage 2

SHOULD BE SENT WITH MAIN SUBMISSION AND EMAILED TO competitions@riai.ie

URBAN School Architectural Design Competition

Submission Deadline: FRIDAY 17 JULY 2015 at 12 noon

Competitor Name(s)

Paul	Fox	BArch MRIAI
Rose	Bonner	BArch MRIAI
David	Jameson	BArch MRIAI
(First Name)	(Family Name)	(Qualification of Competitor)

Practice Name / Organisation - tin architecture + design

Address (in the case of an entry made by a team, please provide the address of the first person listed above)

73 Richmond Hall, Richmond Rd. Dublin 3

Email info@tin.ie

Tel No 086 3110545

Fax No – Mobile No Paul 086 3110545 Rose 087 9589609 David 085 7073672

Collaborators/Consultants

Building Services - Niall Coughlan, Waterman and Moylan Consulting Engineers
Structural Engineer - Michael Conneally, Waterman and Moylan Consulting Engineers
Quantity Surveyor - Robert Nolan, Nolan Construction Consultants

**Design Team
Consultants**

Other information

I / We declare that this work and the drawings have been prepared under my / our supervision.

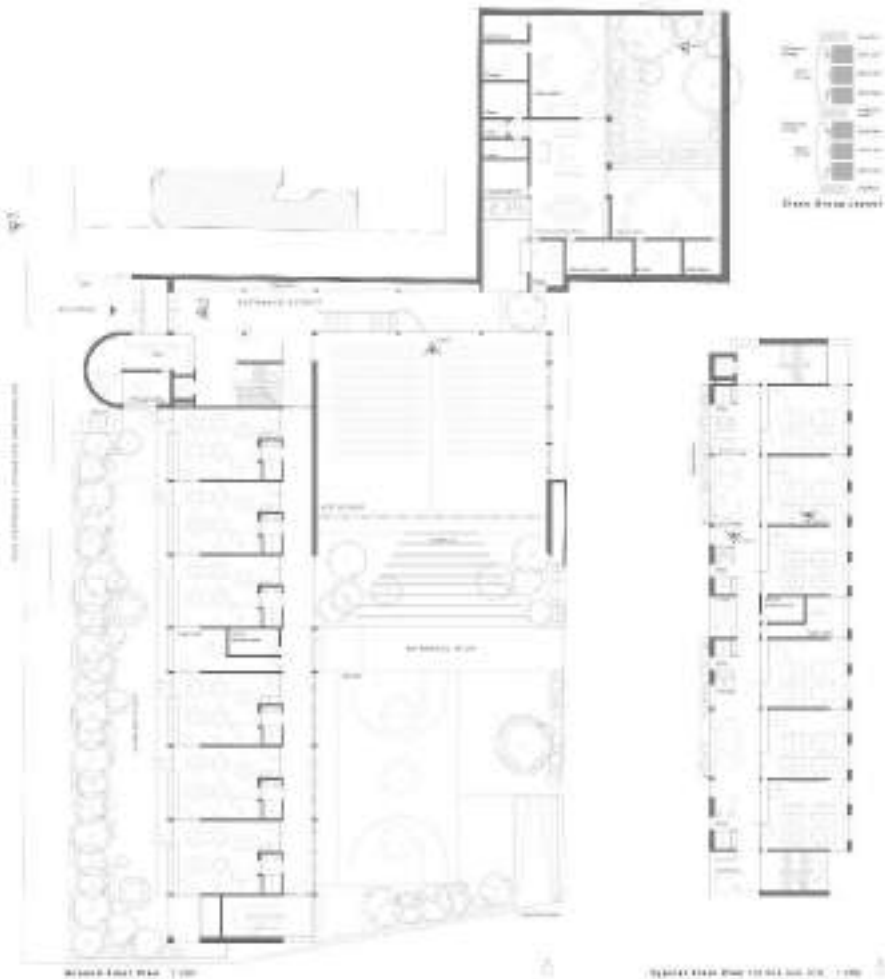
Signed

Date

17th July 2015

Competition Submission

PF111



BACKGROUND
The school is located in a residential area with a mix of housing types. The site is bounded by a residential street to the north and a residential street to the east. The site is currently vacant and is surrounded by mature trees and landscaping.



THE DESIGN
The design is a modern, multi-story building with a mix of materials and colors. The building features a large central courtyard and a series of terraces. The design is inspired by the surrounding residential context and aims to create a high-quality educational environment.





David Jameson

Rose Bonner Alexander

Paul Fox

NEW PRIMARY SCHOOL HARCOURT TERRACE, DUBLIN

Design Statement
September 2017

tún - architecture + design

32 North Brunswick Street, Dublin 7



Aerial Photograph



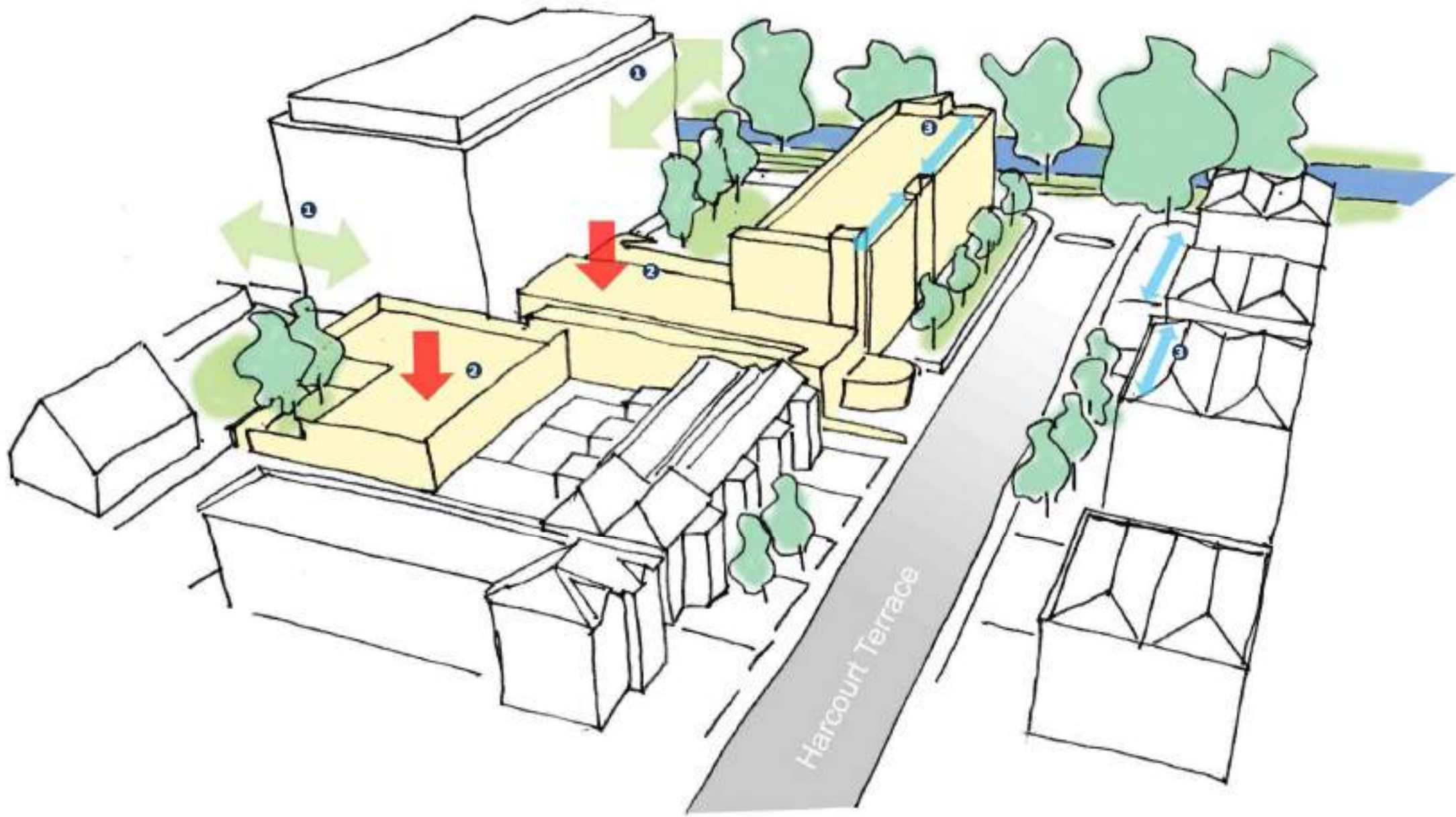
View from northern end of Harcourt Terrace



Redbrick Houses

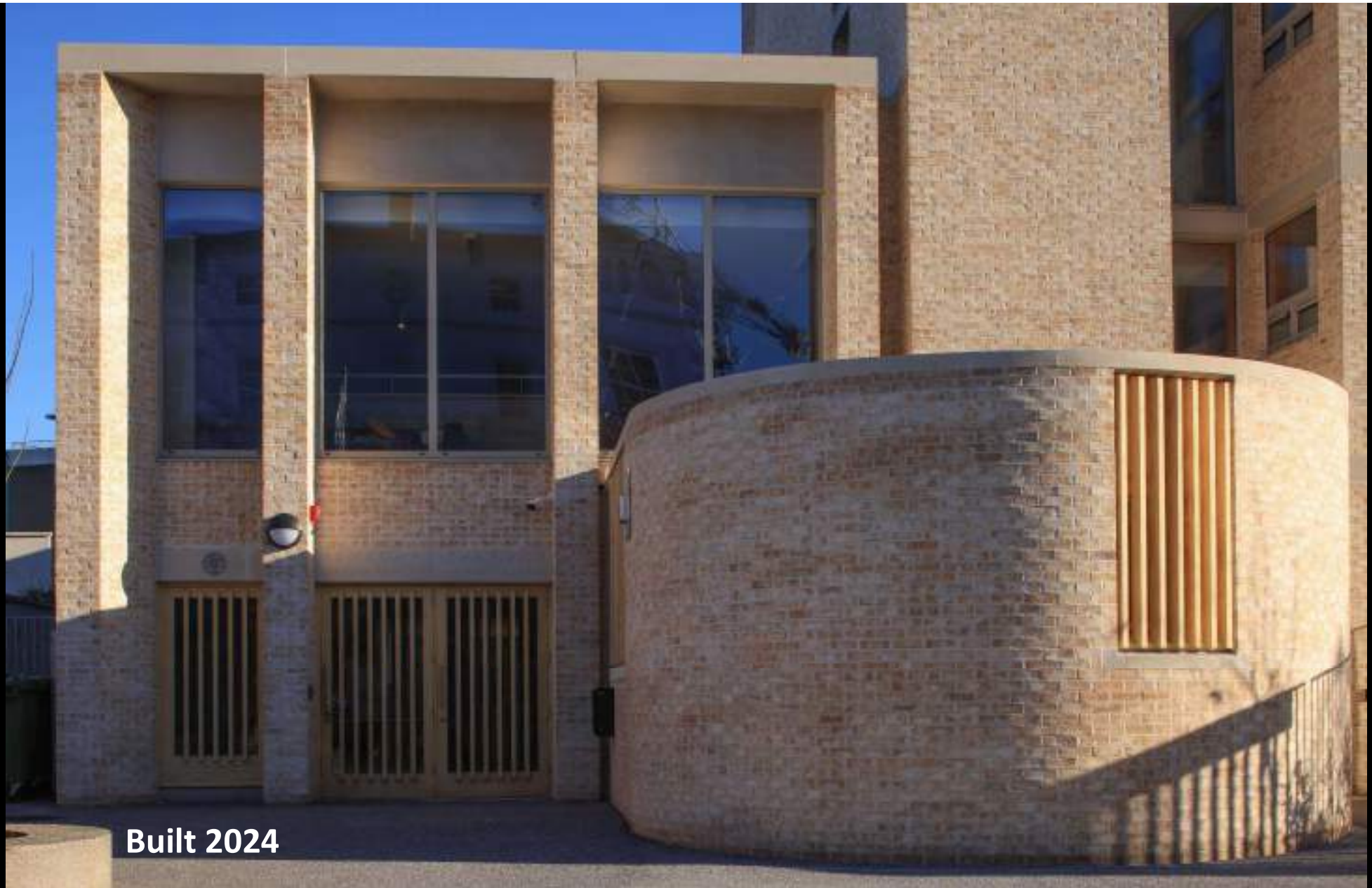


Central pavilion of the Regency terrace





1. Entrance (competition image)



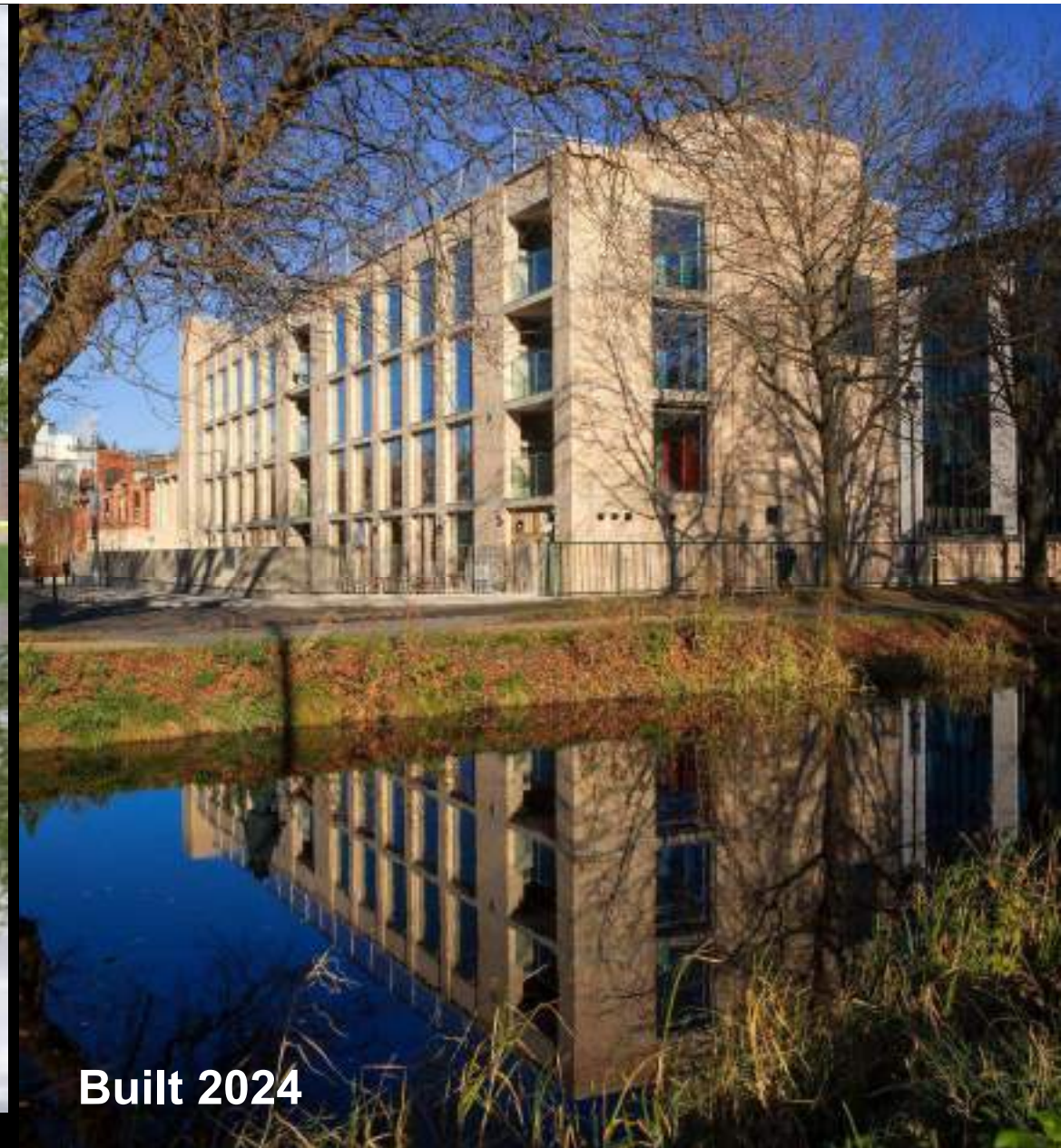
Built 2024



Planning submission rendering 2017



Competition Image 2015



Built 2024



Built 2024



Planning submission rendering 2017



Total Project Cost = €19m

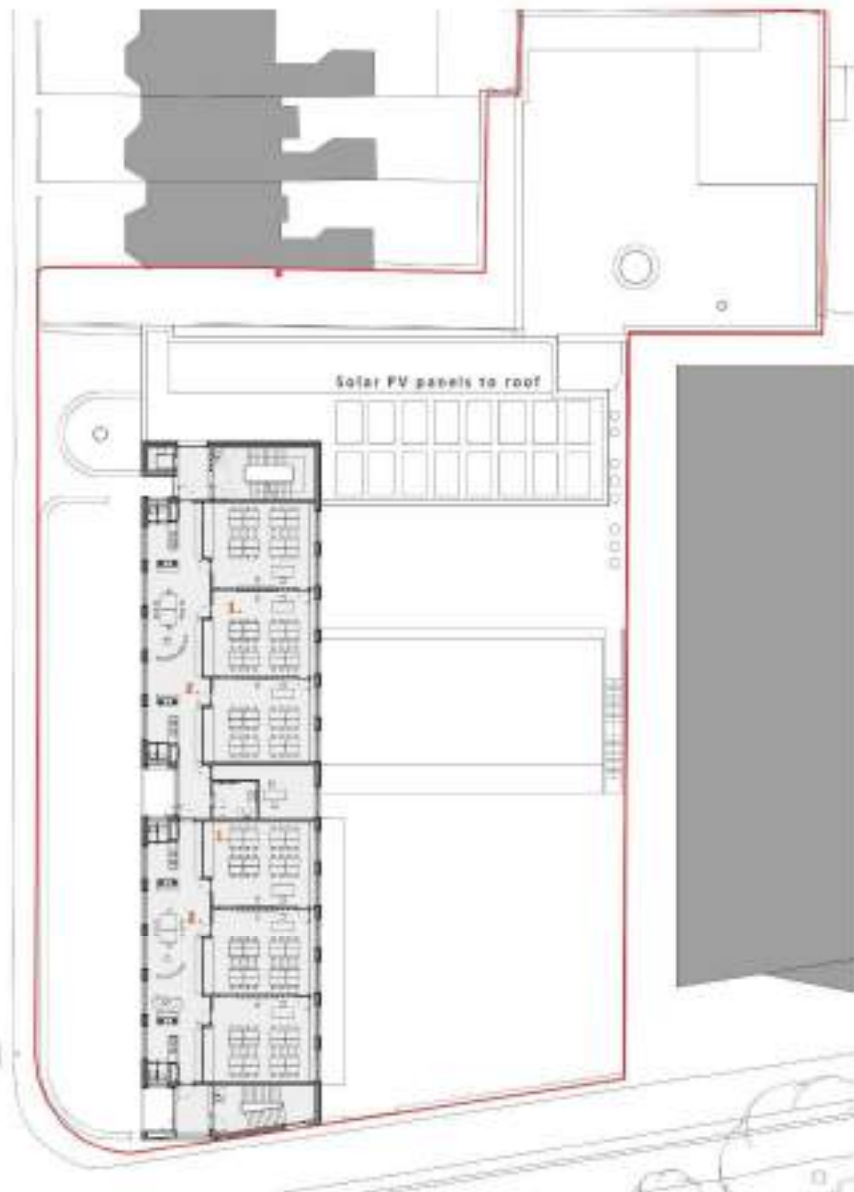
**Basic Building Cost = €2,730m²
(Building Only)**

Total Internal Floor Area = 4,654m² Built 2024



Built 2024





SECOND AND THIRD FLOOR PLANS



1. Class Room (competition image)

Class Bases

The classes are organised in groups of three along a shared 'active corridor' providing additional informal learning and socialising space. There are 6 class bases per floor.

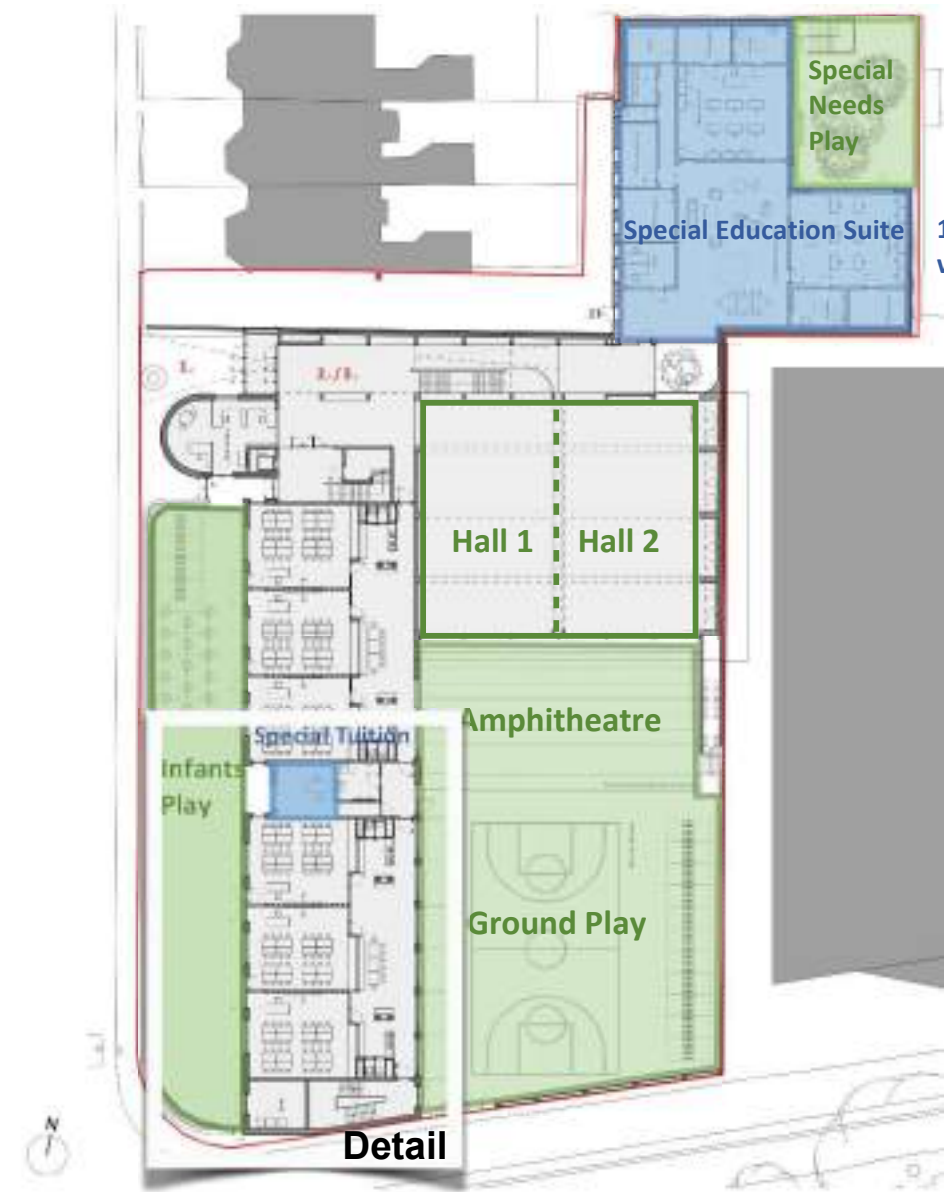


2. Active Corridor (competition image)

Active Corridor

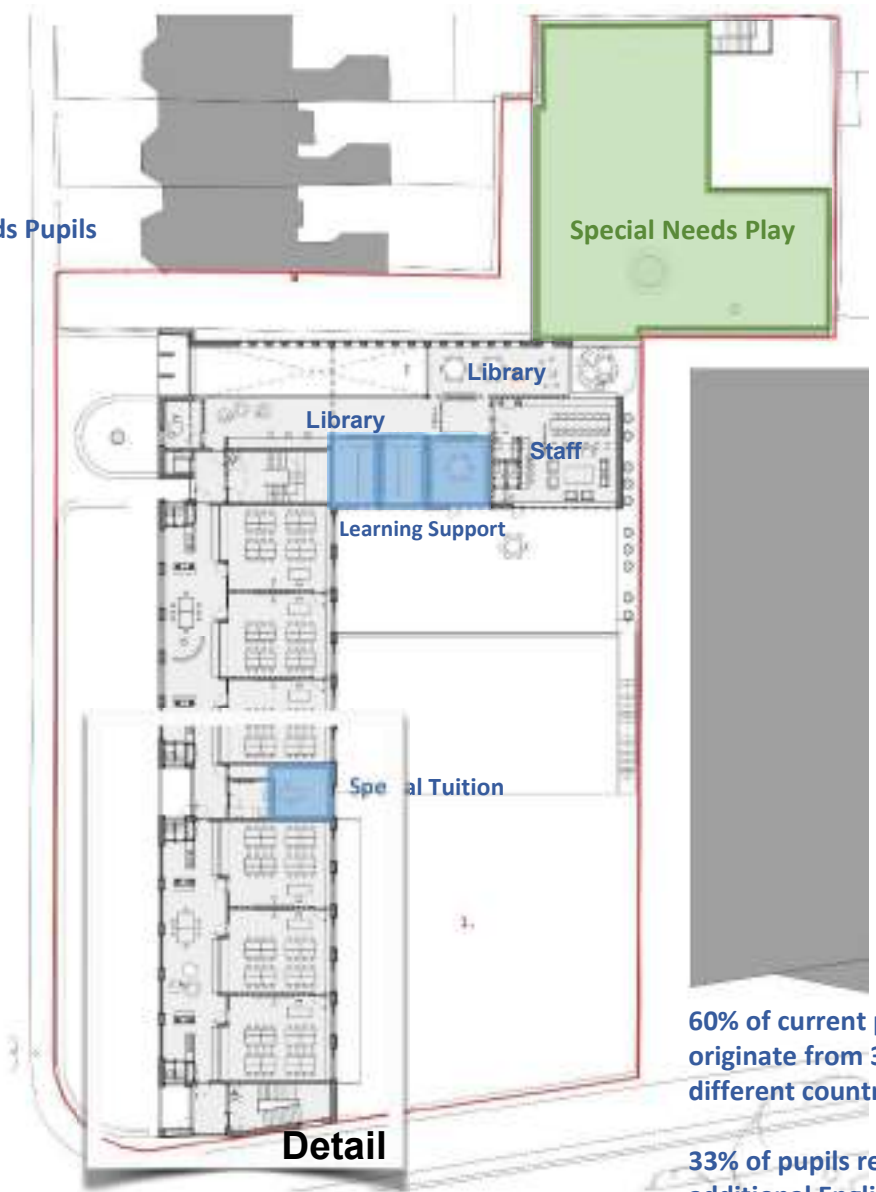
The class bases' ancillary spaces and the circulation areas have been combined to create an 'active corridor', which is seen as a key complimentary informal learning space to the class bases.

Competition Submission Stage 2



GROUND FLOOR PLAN

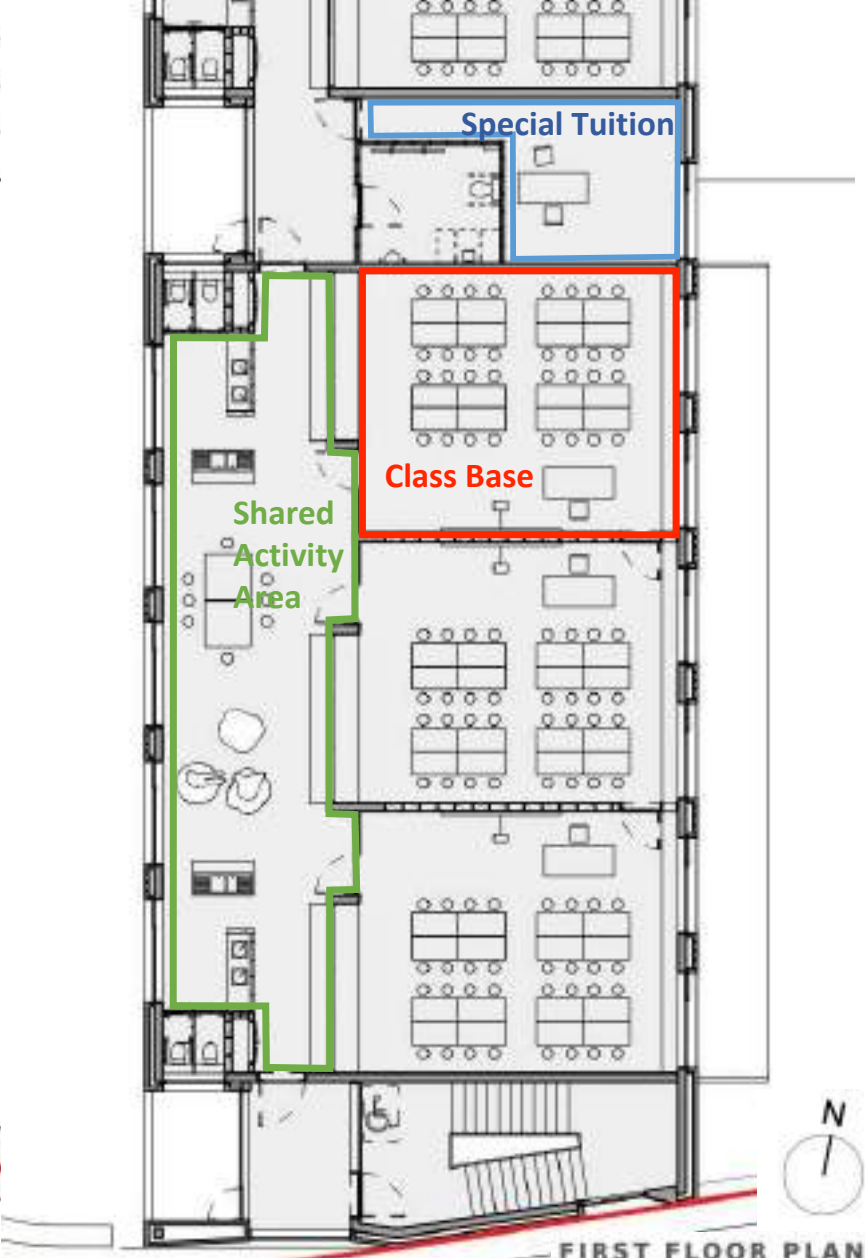
12 Special Needs Pupils with 7 Staff



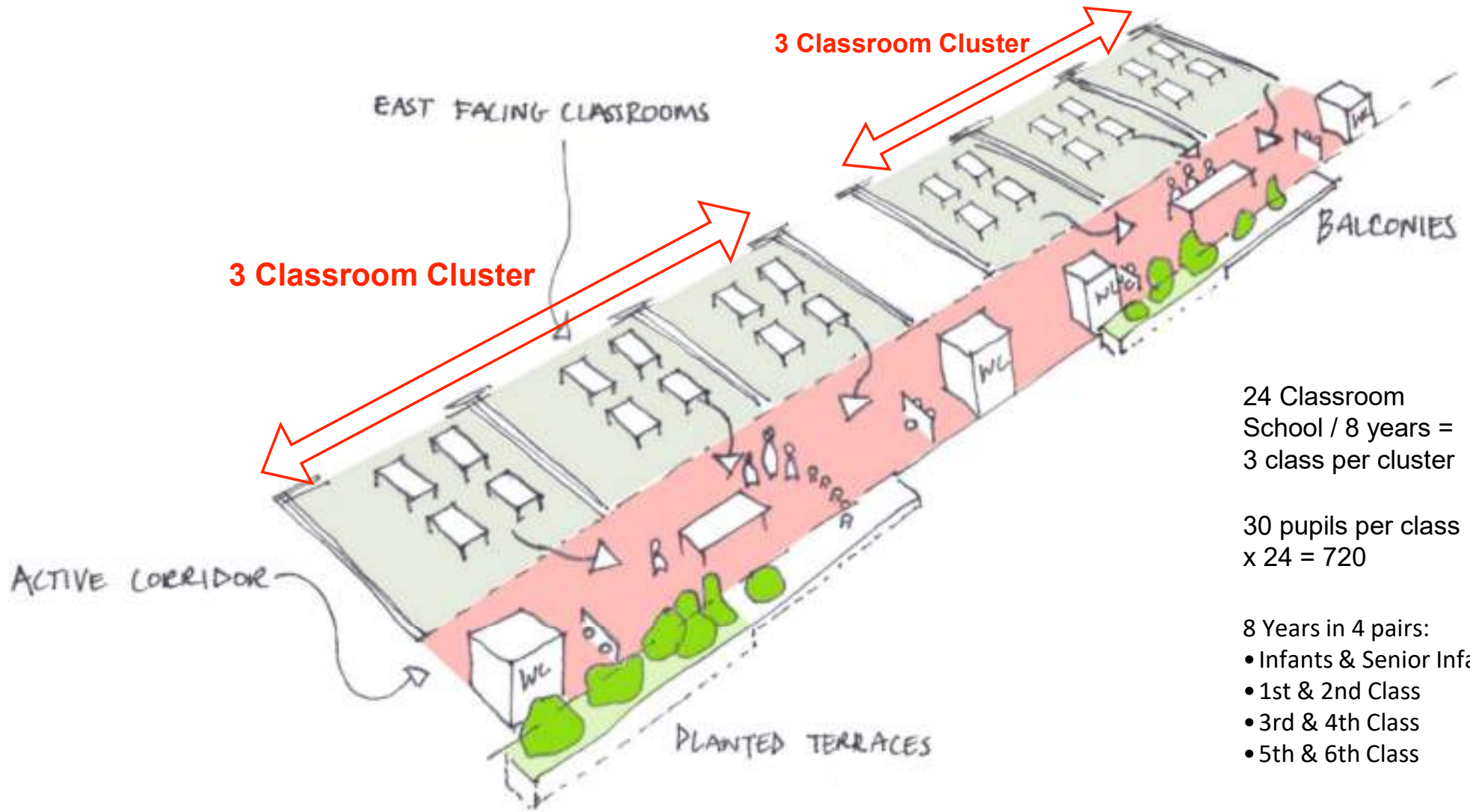
FIRST FLOOR PLAN

60% of current pupils originate from 30 different countries

33% of pupils require additional English language support



Pair of 3 Classroom Clusters



24 Classroom
School / 8 years =
3 class per cluster

30 pupils per class
 $\times 24 = 720$

- 8 Years in 4 pairs:
- Infants & Senior Infants
 - 1st & 2nd Class
 - 3rd & 4th Class
 - 5th & 6th Class



Shared Activity Area - Competition image 2015



Shared Activity Area - Built 2024



Toilets

Wash

Wet Activities

Coats

Class Base



Toilets

Coats

Informal Group Learning

Wet Activities



Glazed door
to Class Base

Coats

Wet Activities

A photograph of a children's activity room. On the left, there is a green-framed sink area with a child standing behind it. In the center, a green door is marked with a fire exit sign. To the right, a group of children are seated at a table with blue and red chairs, engaged in an activity. The room has large windows on the right side, providing natural light. The floor is a light-colored carpet.

Toilets

Fire Exit from
compartment

Wet Activities - Art & Science

Informal Group Work

Lockable Storage & Display

Group Formal Learning

Shared Activities

Class Base - Glazed Door to Shared Area





Informal Group

Wet Activities - Art & Science

Fire Exit from
compartment

Wet Activities
Art & Science

Toilets



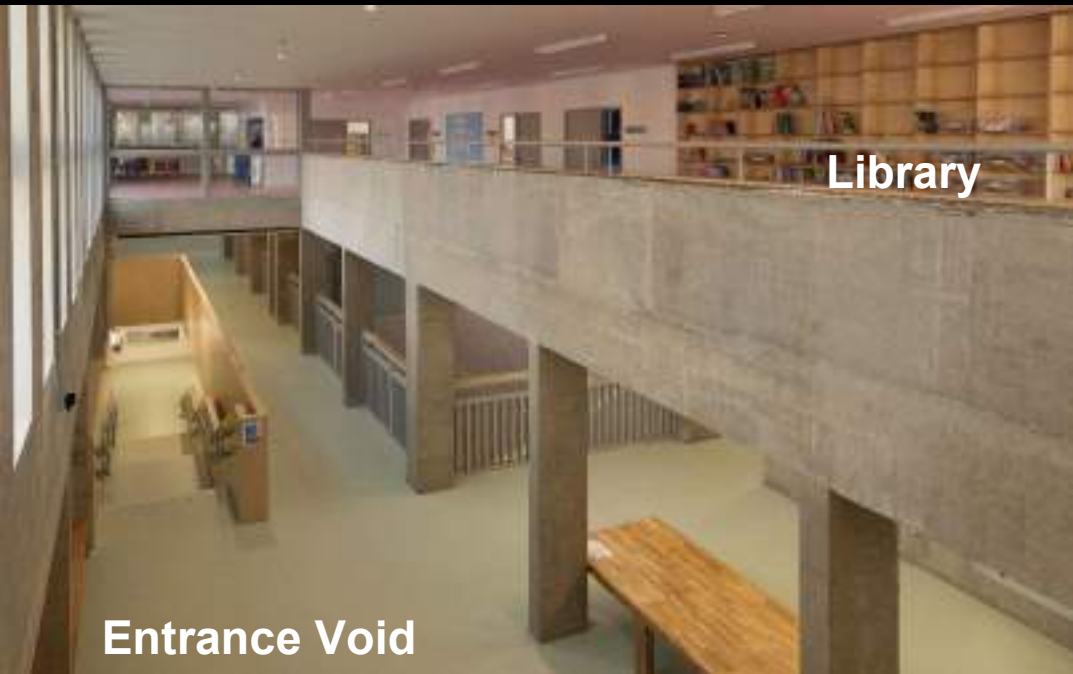
Infants Play in Shared Area



1. Entrance Space (composition: image)

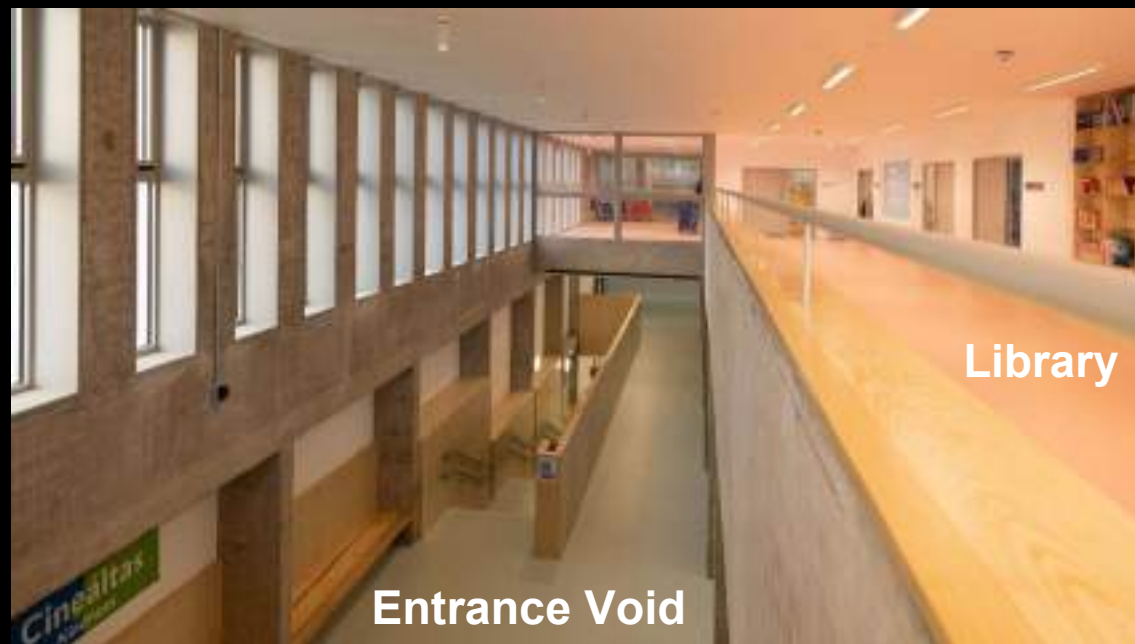


Library



Library

Entrance Void



Library

Entrance Void



Roof Top Play Area

Ground Play Area

PV Panels

PV Panels



Roof Top Play Space - in use 2024



Roof Top Play

Ground Play Area

**Stepped
Amphitheatre**

Hall



1. Play Space (competition image)




Ground Play Space - Built 2024



Covered Bench & Ground Play Space - Built 2024

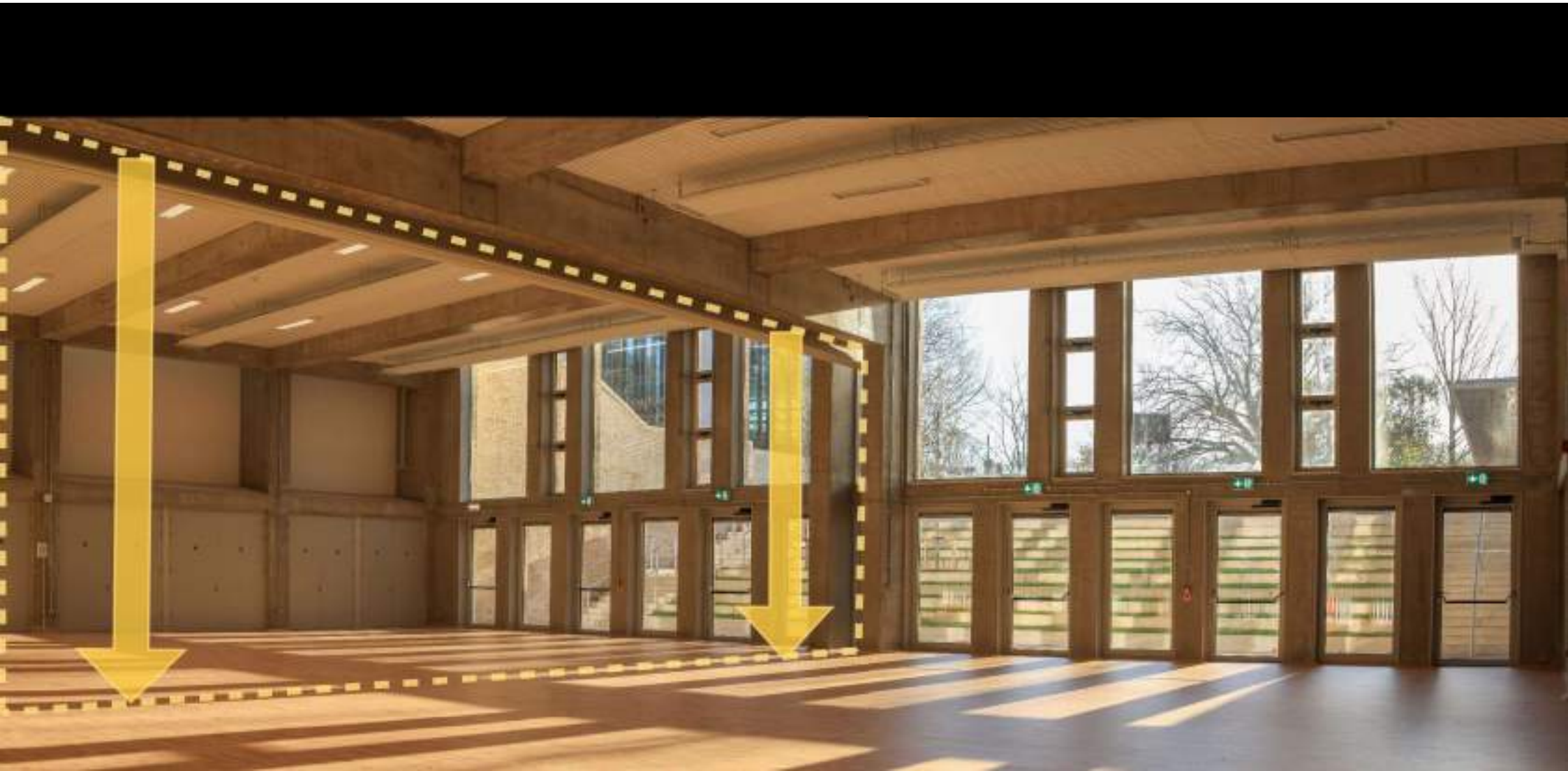


Stepped Amphitheatre Built 2024

Down to Hall 



GP Hall (competition image) The general purpose hall is located in basement level at the northern end of the site. It can be accessed from two levels via the entrance space, and from the main play space via an amphitheatre allowing it to function as a covered play space.



Room divider cost €90,000 enabling 2 separate groups to use Hall

Hall Built 2024



Hall in use 2024



ご清聴ありがとうございました

Thank you for your attention

連絡先

Contact at

tonysheppard1@gmail.com