

# HESA



## **Graduate Outcomes: Tracking the Pathways of Graduates from UK Universities**

Rachel Hewitt, Data Policy and Governance Manager, HESA

12/12/2017



## HESA data

Students

Universities

Staff

For  
prospective  
students

Graduates

# Tracking the Pathways of Graduates from UK Universities

- Purpose of data collection
- History of data collection
- Survey design
- Resources required
- Onward use of the data



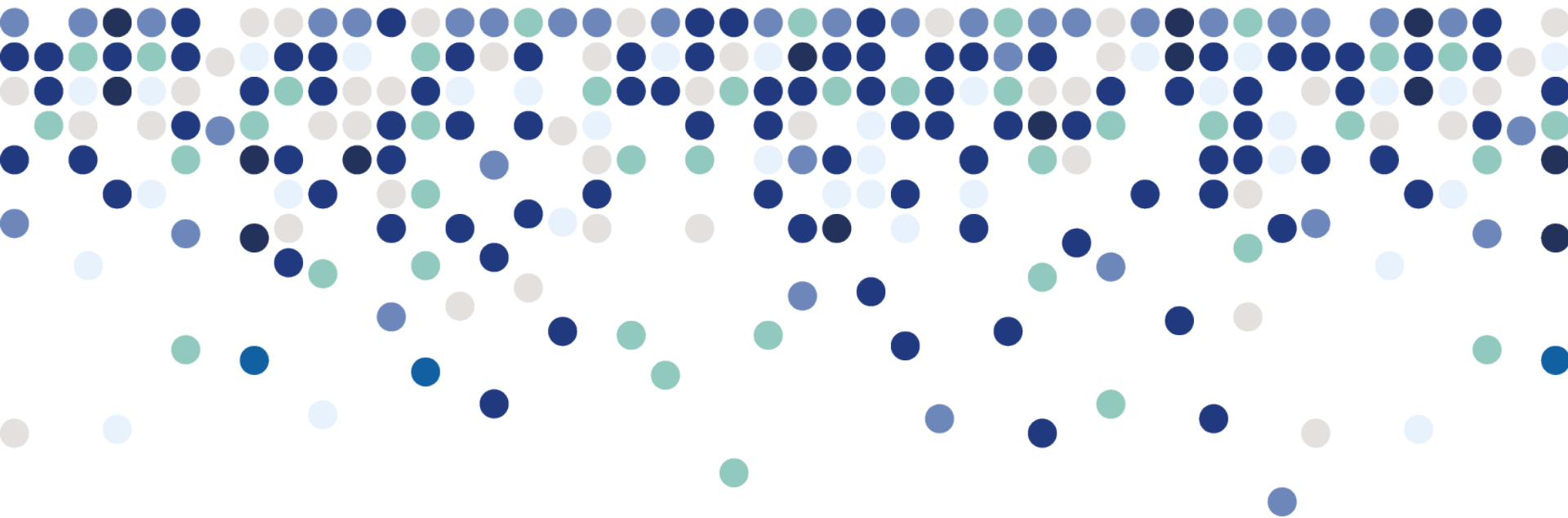
## **Purpose of collecting data on graduate outcomes**



# Why do we collect data about graduates?

- Statutory requirement for funding
- Supports prospective students
- High demand for the data from researchers, press, policy
- Demonstrates value of higher education

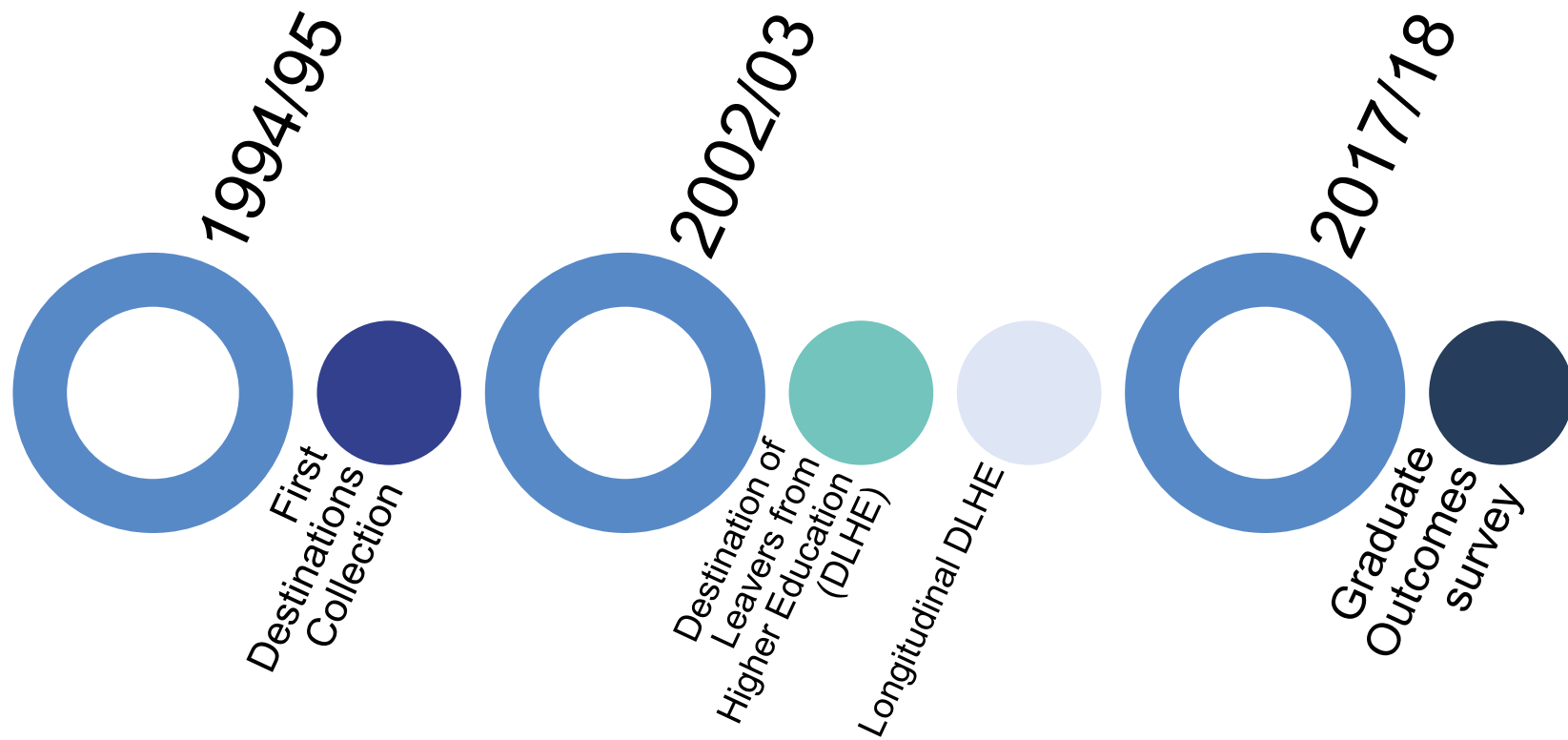
# HESA



## History of the data collection



# Timeline



# **First Destinations/Destination of Leavers from Higher Education (DLHE)**

- Census approach
- 6 months after graduation
- Conducted annually
- Run by universities
- Data submitted to HESA



# Longitudinal DLHE

- Follow up survey
- Three years after DLHE
- Sample survey
- Conducted every two years
- Run by a central survey contractor

## Fundamental review

- Ran from July 2015 – July 2017
- Two consultations
- Culminated in the development of Graduate Outcomes



### Future proof

Fundamental consideration of **future data requirements**.



### Improve efficiency

Improve efficiency of data collection.



### Fit-for-purpose

Revisit methodology to ensure **fit-for-purpose** for future usage.



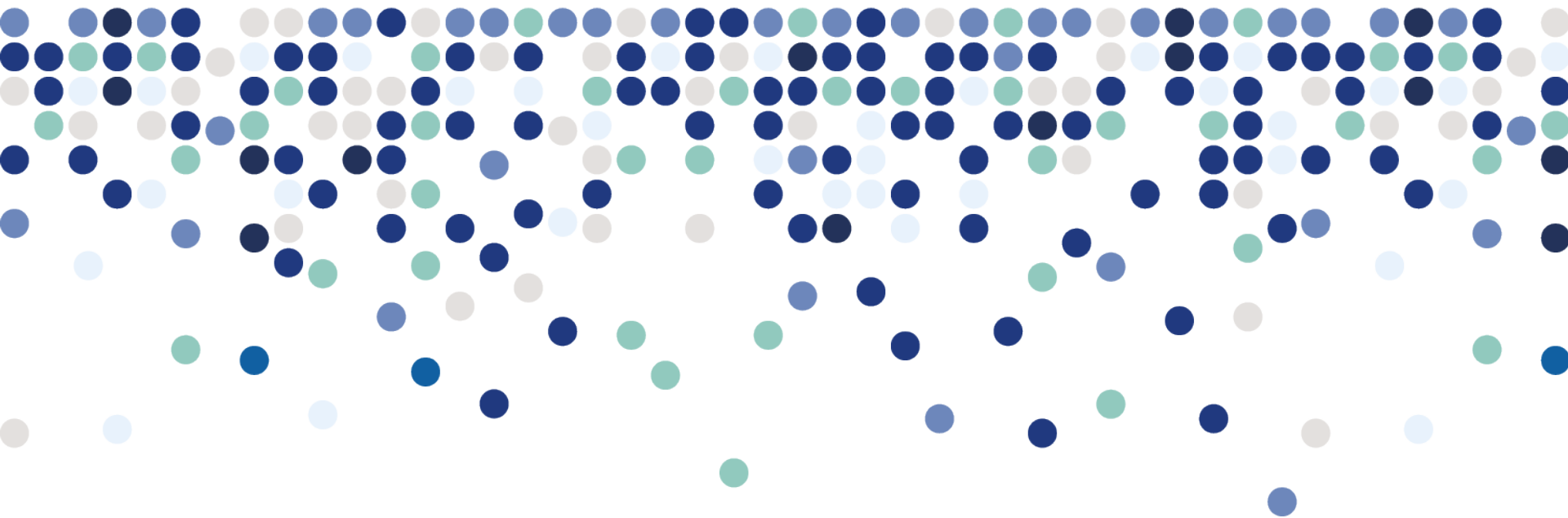
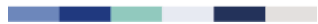
### Support legislation

Take into account recent **legislative developments**, and support developing ones.

## Graduate Outcomes

- Replaces the DLHE and Longitudinal surveys
- Census approach (600,000+ each year.)
- 15 months after graduation
- Run by a central survey contractor, funded by universities
- Steering group to oversee delivery
- Use of linked data

# HESA



## Survey design



# What kind of questions will graduates be asked?

- What are they doing – working, further study, etc?
- Where are they working?
- What role have they taken?
- Information on entrepreneurs and creatives
- Linked data to understand earnings

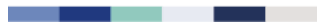
# What kind of questions will graduates be asked?

- What are they studying?
- Level of qualification
- Where are they studying?
  
- Future plans
- Meaningful and important
- Using what they learnt in their studies

## Methodology

- Survey carried out:
  - Online
  - Over the telephone
  - On paper (in some instances)
- Response rates
  - 80% UK-domiciled full time students

# HESA



## Resources required





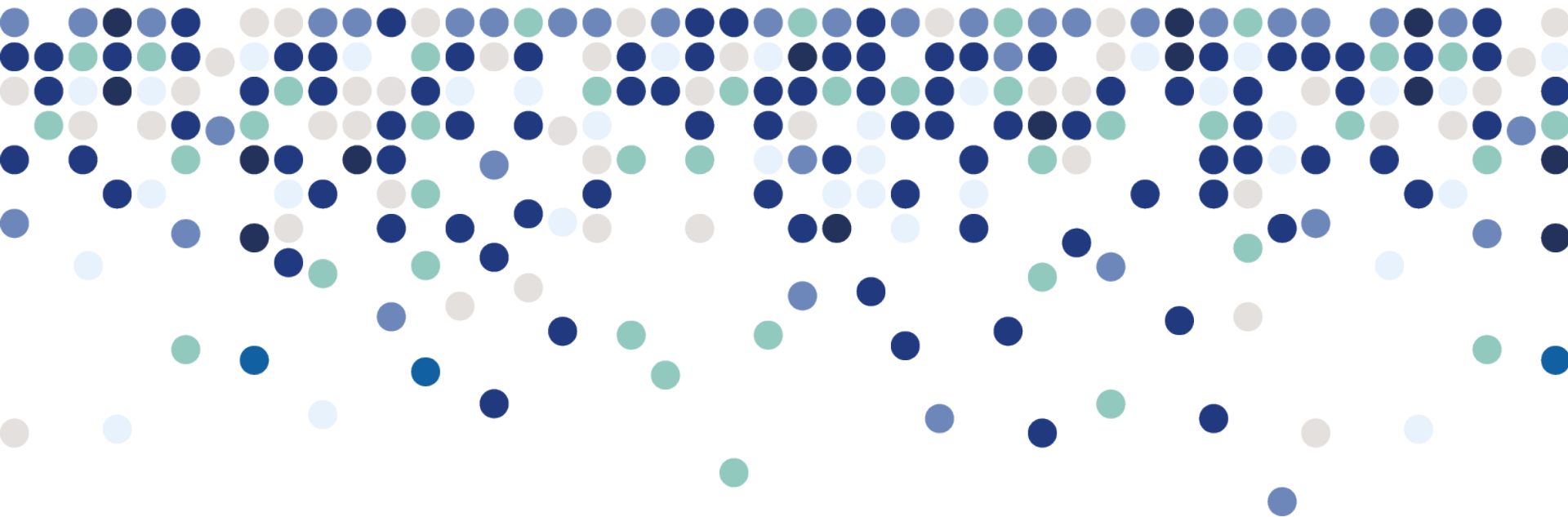
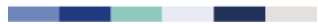
## First Destinations/DLHE resourcing

- Universities resource:
  - Running the survey
  - Processing the data (coding, quality assurance)
  - Cost estimated to be around £4.5 million a year
- HESA
  - Supporting universities in the collection process
  - Developing systems to collect the data
  - Processing the data (quality assurance)
  - Supplies the data back to universities and government agencies

## Graduate Outcomes resourcing

- Universities resource:
  - Pay a subscription to HESA
  - Supply contact details to HESA
- HESA
  - Oversees the survey contractor running the survey
  - Supplies the data back to universities and government agencies
- Survey contractor
  - Running the survey
  - Processing the data (coding, quality assurance)

# HESA



## Onward use of the data



# Types of data output

National Statistics  
statistical first  
release

UK Performance  
Indicators

HESA open data  
publications

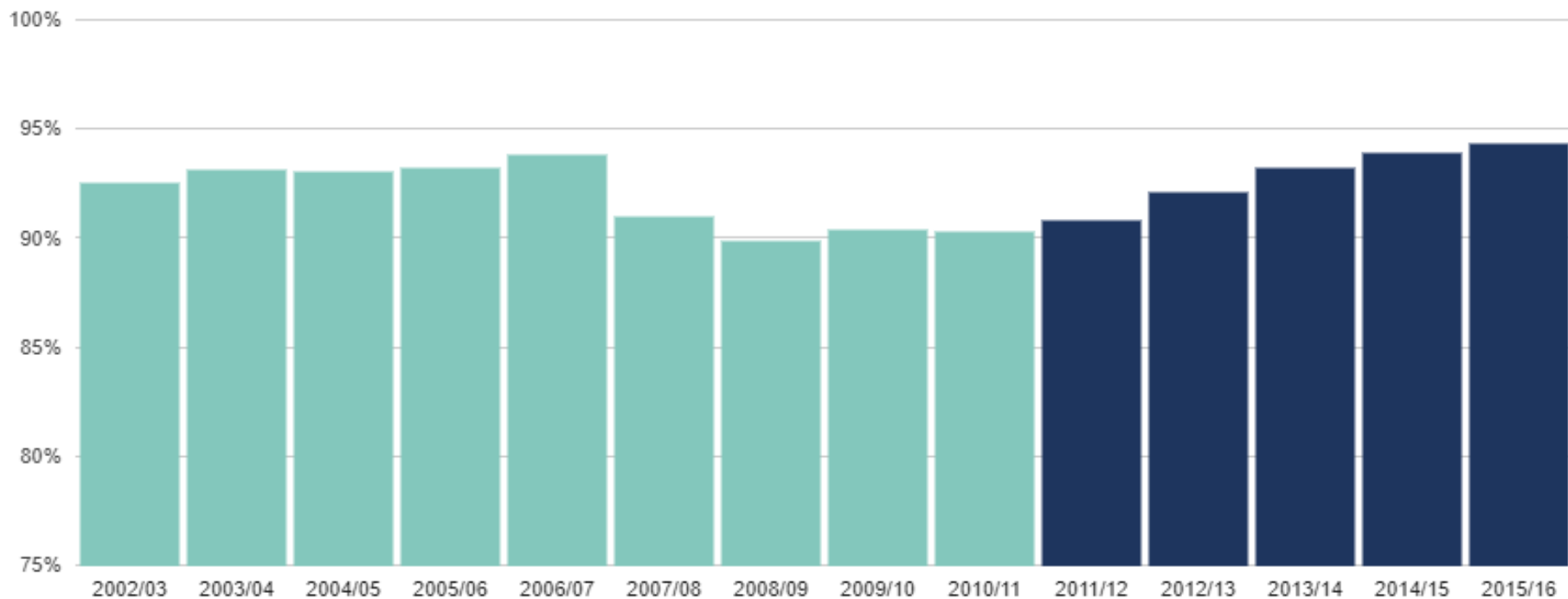
Heidi Plus

Data supply to  
universities and  
government  
agencies

Public  
dissemination  
through HESA data  
and analysis  
services

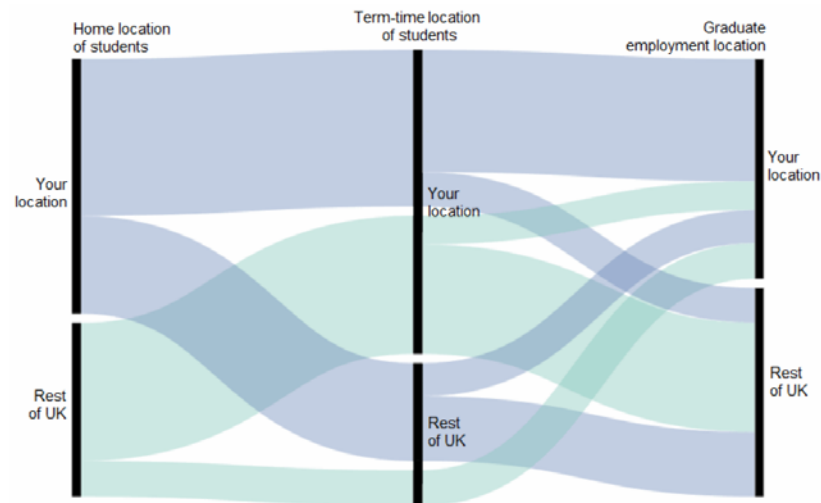
# Performance Indicators – Employment of Leavers

Chart 11 - Percentage of UK domiciled full-time first degree leavers in employment and/or further study by academic year



## Custom data service

- Complements the range of publications
- Customised extracts of data to meet specialised requirements
- Receive around 1,200 enquiries annually
- Data supplied under contract
- New HE Impact Report



Map the flow of HE students and graduates into and out of your chosen location (sample chart from report)

# Custom data service



## League tables


**TOP EUROPEAN UNIVERSITIES 2011-2012**



WORLD RANK	INSTITUTION	COUNTRY / REGION	Score
4	University of Oxford	United Kingdom	92.4
6	University of Cambridge	United Kingdom	90.7
8	Imperial College London	United Kingdom	85
15	ETH Zürich - Swiss Federal Institute of Technology Zürich	Switzerland	83.2
17	University College London	United Kingdom	73.1
32	Karolinska Institute	Sweden	72
36	University of Edinburgh	United Kingdom	67.6
45	Ludwig-Maximilians-Universität München	Germany	66.3
46	École Polytechnique Fédérale de Lausanne	Switzerland	66
47	London School of Economics and Political Science	United Kingdom	65.7
48	University of Manchester	United Kingdom	63.2
56	King's College London	United Kingdom	62
59	École Normale Supérieure	France	61.9
61	University of Zürich	Switzerland	61.5
63	École Polytechnique	France	60.9
66	University of Bristol	United Kingdom	60.8
67	Katholieke Universiteit Leuven	Belgium	60.4
68	Utrecht University	Netherlands	60.3
69	Georg-August-Universität Göttingen	Germany	60.2
70	University of Warwick	United Kingdom	60.1
71	University of York	United Kingdom	60.0
72	University of Exeter	United Kingdom	59.9

**Economics**  
More about this subject and compare research ratings

Go to:



Rating	Name of institution	Guardian score /100	Satisfied with course (%)	Satisfied with teaching (%)	Satisfied with feedback (%)	Student: staff ratio	Spend per student (FTE)	Ave entry tariff	Value added score /10	Job after 6 mths
1	Oxford	100	96	93	67	10.7	10	543	9	82
2	Cambridge	77.5	86	81	62	15.1	10	555	6	82
3	London School of Economics	70.7	74	75	56	13.1	8	555	5	89
4	Warwick	70.1	87	77	53	16.2	7	516	8	86
5	St Andrews	69.4	83	80	63	17.1	5	462	8	89
5	UCL	69.4	85	79	60	15.2	9	493	5	84
7	York	68.3	92	89	63	15.2	7	438	6	73
8	UWE Bristol	67.1	92	91	82	20.8	4	255	10	61
9	Kent	66.4	96	91	82	13.9	5	318	5	64
10	Edinburgh	66.1	74	79	37	14.7	9	445	9	66
11	Birmingham	65.9	90	85	66	21.1	9	410	6	69
12	Durham	65.4	84	82	59	19	5	505	8	82
13	SOAS	65.3	79	80	56	13.9	7	408	7	71
14	Exeter	64.5	90	85	58	18.1	4	425	9	66
15	Leeds	63.9	83	77	55	19.7	10	427	7	74
16	Surrey	62.3	97	90	75	21.3	5	363	6	63
17	Nottingham	61.8	90	81	50	16.8	6	478	5	78
18	Lancaster	61	84	79	54	18.6	9	414	4	79
19	Bath	60.3	85	84	46	18.9	5	483	4	89
20	Sheffield	60.3	82	84	48	18.8	2	483	4	88
20	Sheffield Hallam	60.1	84	78	24	18.8	8	414	4	78
21	Sheffield	60.0	80	81	20	18.8	8	418	2	78
21	Sheffield Hallam	60.0	78	80	18	18.8	8	418	2	78



# UNISTATS

## UNISTATS

Compare official course data from universities and colleges

[Home](#) [Your Unistats](#) [Subjects](#) [Universities & colleges](#) [Course assistant](#) [Find out more](#)

[Cymraeg](#)

in

Search
More search options ▶

Shortlist: No courses added

[Sign in or register](#)

## The official website for comparing UK higher education course data

Includes official data for undergraduate courses on each university and college's satisfaction scores in the National Student Survey, jobs and salaries after study and other key information for prospective students.

### Courses

Listed by subject

<p><a href="#">Medicine and Dentistry</a></p> <p><a href="#">Nursing and medical related subjects</a></p> <p><a href="#">Biological Sciences</a></p> <p><a href="#">Veterinary Sciences</a></p> <p><a href="#">Agriculture and related subjects</a></p> <p><a href="#">Physical Sciences</a></p> <p><a href="#">Mathematical Sciences</a></p> <p><a href="#">Computer Science</a></p> <p><a href="#">Engineering and Technology</a></p> <p><a href="#">Architecture, Building and Planning</a></p>	<p><a href="#">Social studies</a></p> <p><a href="#">Law</a></p> <p><a href="#">Business and Administrative studies</a></p> <p><a href="#">Mass Communications and Documentation</a></p> <p><a href="#">Languages, Literature and related subjects</a></p> <p><a href="#">Historical and Philosophical studies</a></p> <p><a href="#">Creative Arts and Design</a></p> <p><a href="#">Education</a></p> <p><a href="#">Initial Teacher Training</a></p> <p><a href="#">Geographical Studies</a></p>
--	---

### Universities & colleges

A-Z

A	B	C	D
E	F	G	H
I	J	K	L
M	N	O	P
Q	R	S	T
U	V	W	X
Y	Z		

Compare stats about courses by adding them to the short list

#### COURSE ASSISTANT

Answer a few questions to let us help you find some courses that may be of interest to you

[Get started ▶](#)

#### QUICK ANSWERS

- [? About Unistats](#)
- [? How to use Unistats](#)
- [? The Key Information Set \(KIS\)](#)

**£23,000**



Typical salary range: £20,000.00 - £26,000.00



## Average salary across the UK after taking a similar course

£19,000.00 after six months (salary range: £16,000.00 - £22,000.00)

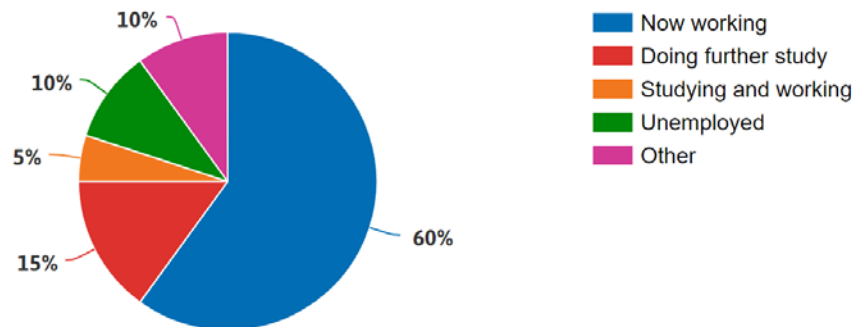
£24,000.00 after 40 months (salary range: £20,000.00 - £28,000.00)

## Go on to work and/or study

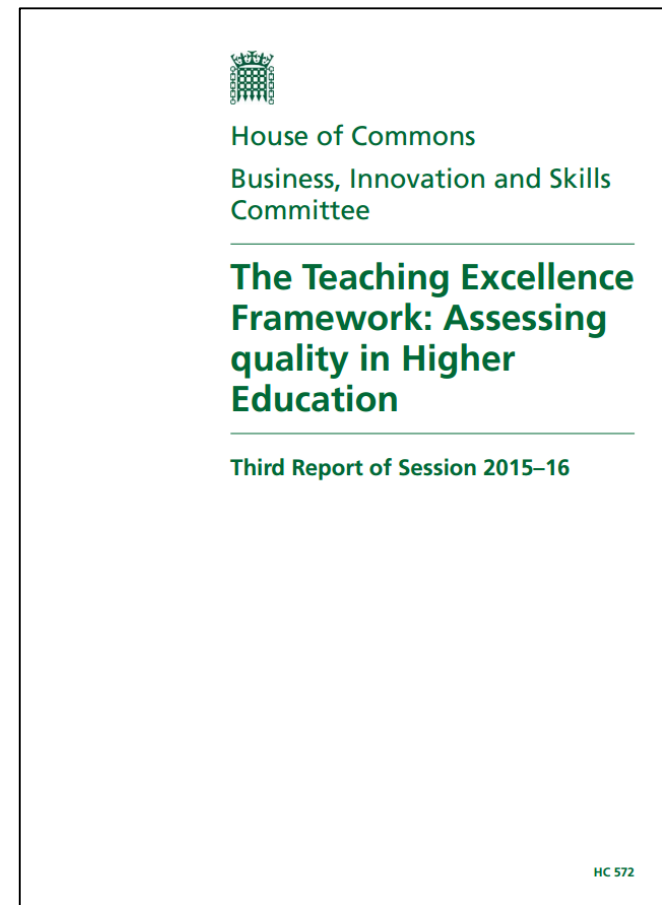
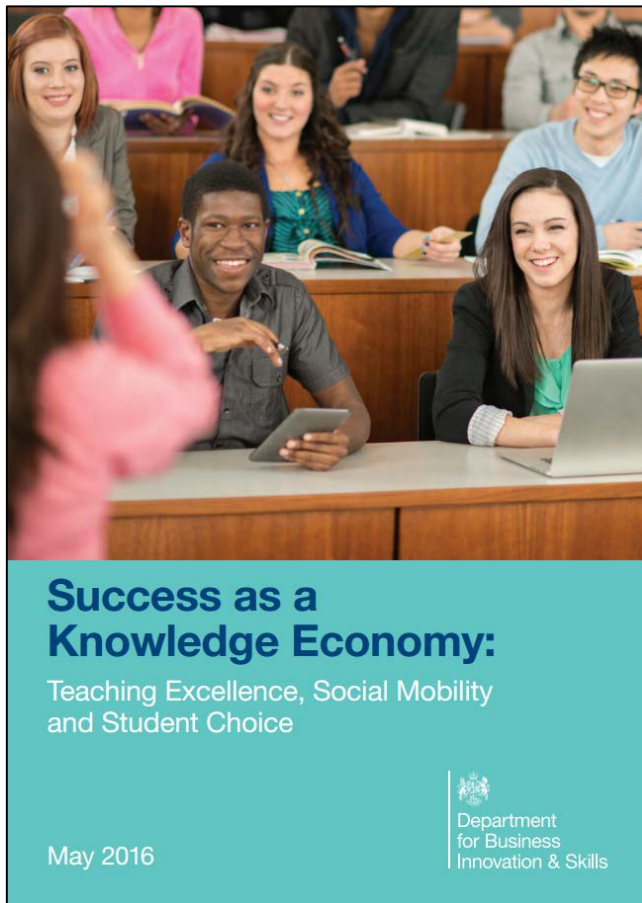
This is what students are doing six months after finishing the course.

Social Policy

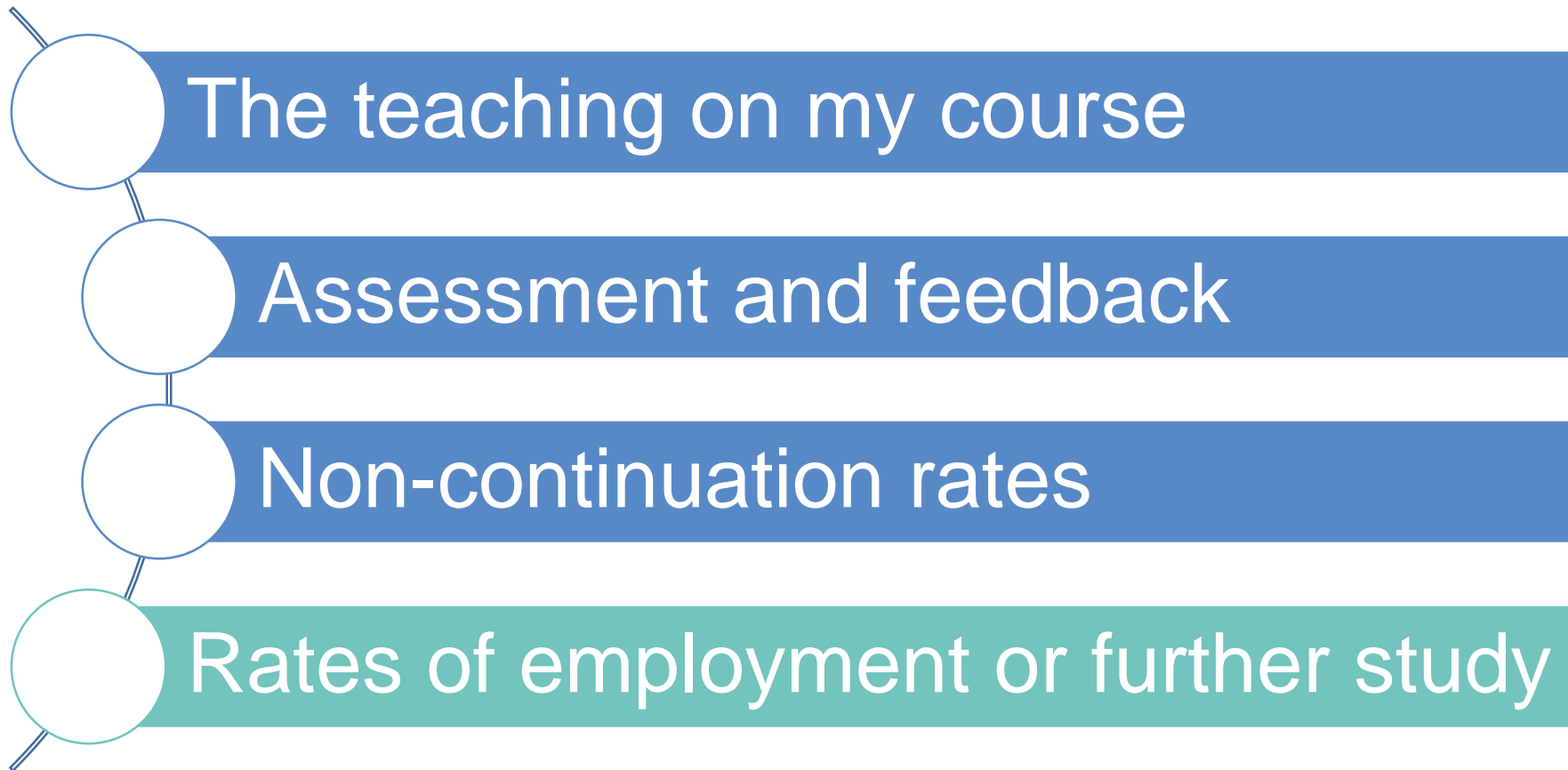
**85%**



# TEF (Teaching Excellence Framework)



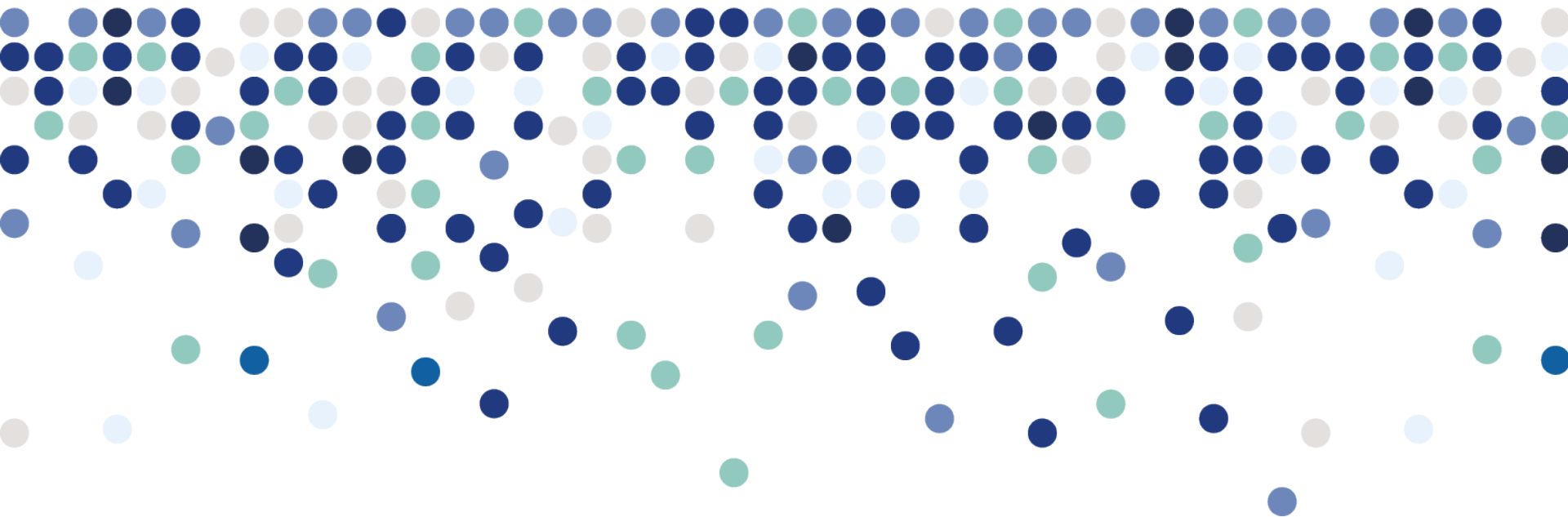
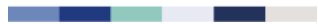
## TEF Metrics



## Data protection

- Personal and sensitive data
- Counts - rounded to the nearest multiple of 5.
- Percentages not published if they are fractions of a small group of people (fewer than 22.5).
- Averages not published if they are averages of a small group of people (7 or fewer).
- Collection notices

# HESA



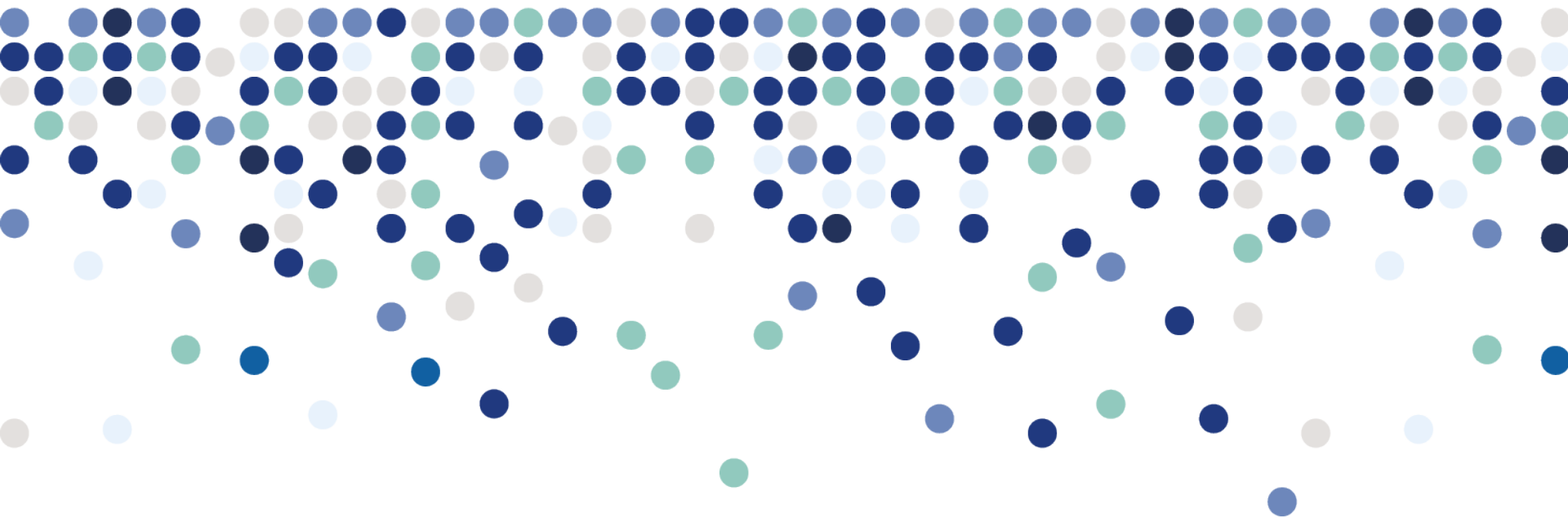
## Summary



# Tracking the Pathways of Graduates from UK Universities

- Data has been collected since 1994/95
- Recent updates – now collecting the Graduate Outcomes survey
- Survey investigates activities of graduates after leaving university
- Survey funded by UK universities
- Data put to a wide range of uses

# HESA



## Thank you

[rachel.hewitt@hesa.ac.uk](mailto:rachel.hewitt@hesa.ac.uk)

